



"Enabling a safer society and smarter living"

ABOUT US



World-leading video-centric smart IoT solution and service provider



22,000+
Employees



6,700+
Patent Applications



180
Distribution Coverage
(Number of Countries
& Regions)



58
Overseas
Subsidiaries
& Representative
Offices



200+
China Offices



No.2*
Global Market
Share

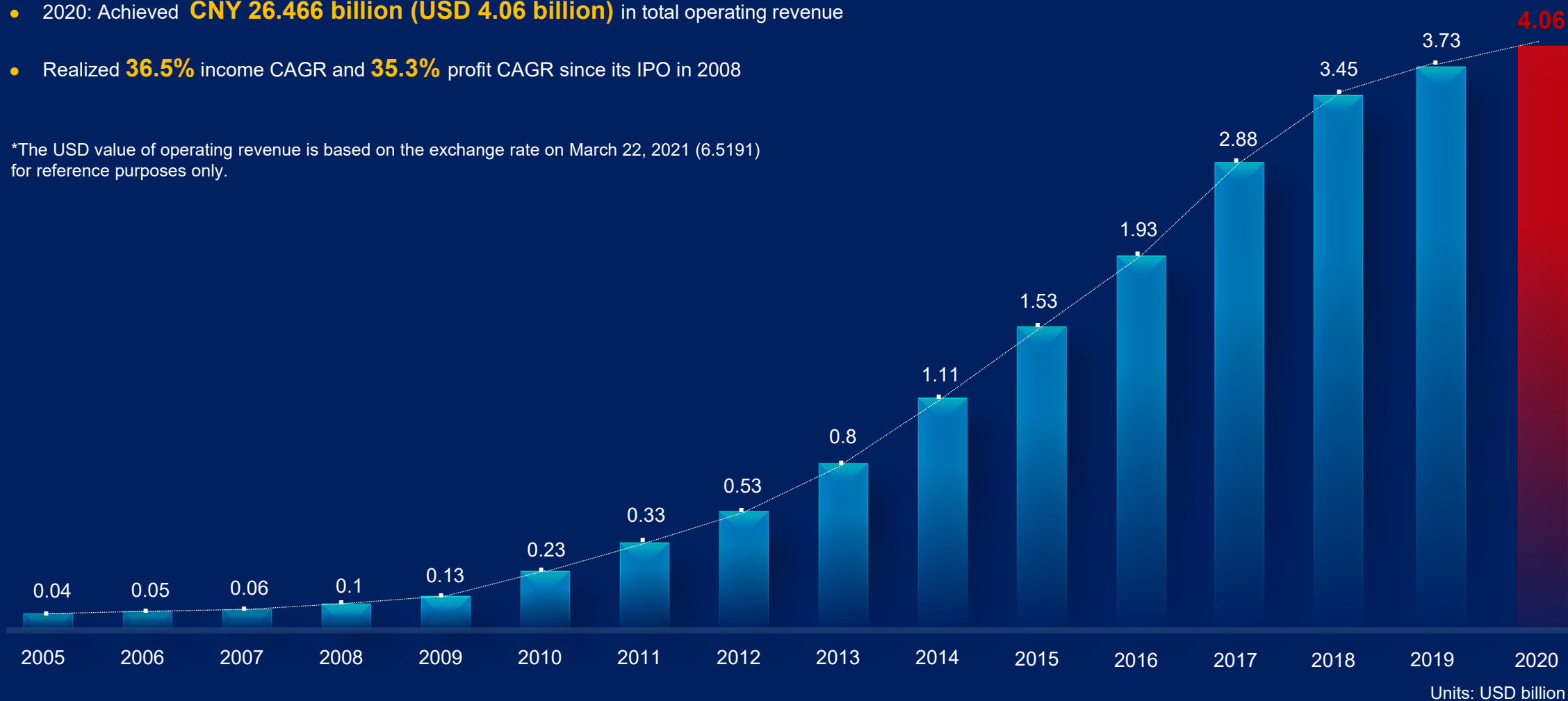
*Source: Omdia 2020 Video Surveillance Analytics Market Share Database

BUSINESS PERFORMANCE

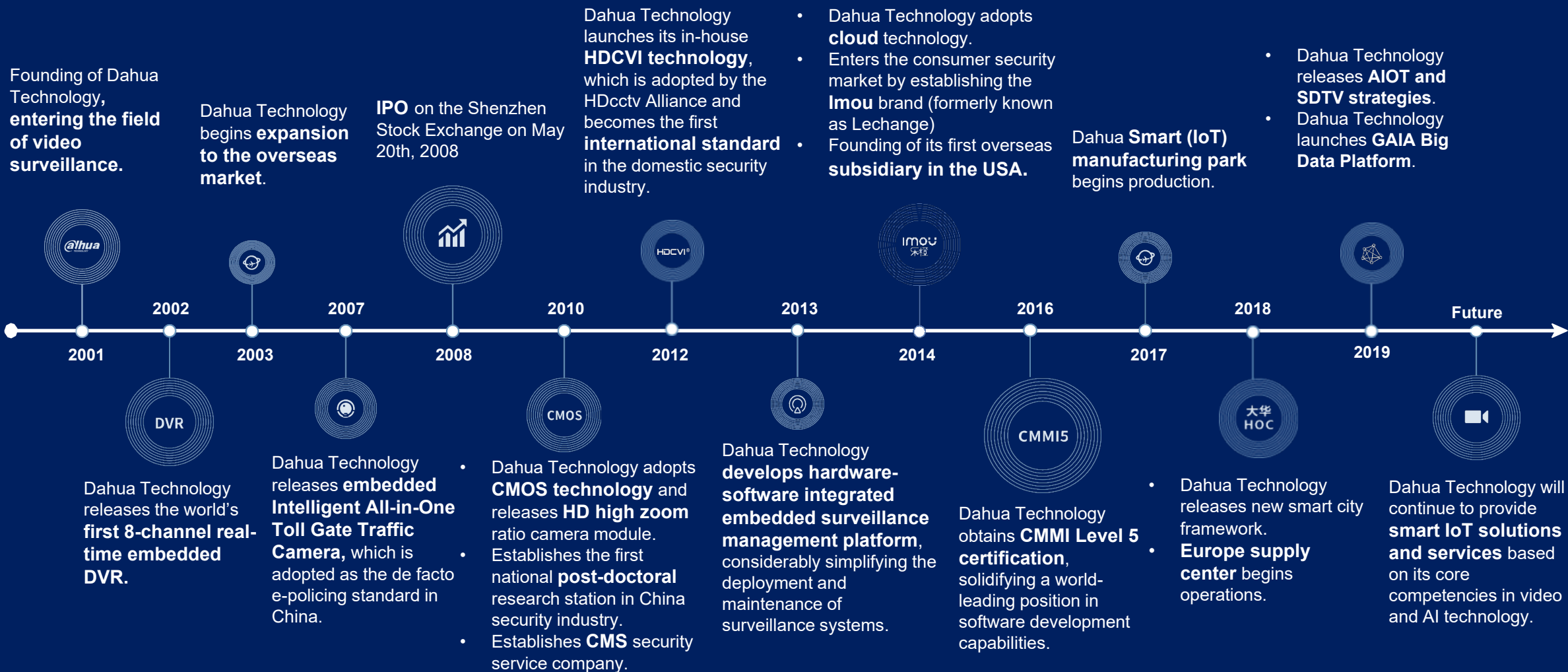


- 2020: Achieved **CNY 26.466 billion (USD 4.06 billion)** in total operating revenue
- Realized **36.5%** income CAGR and **35.3%** profit CAGR since its IPO in 2008

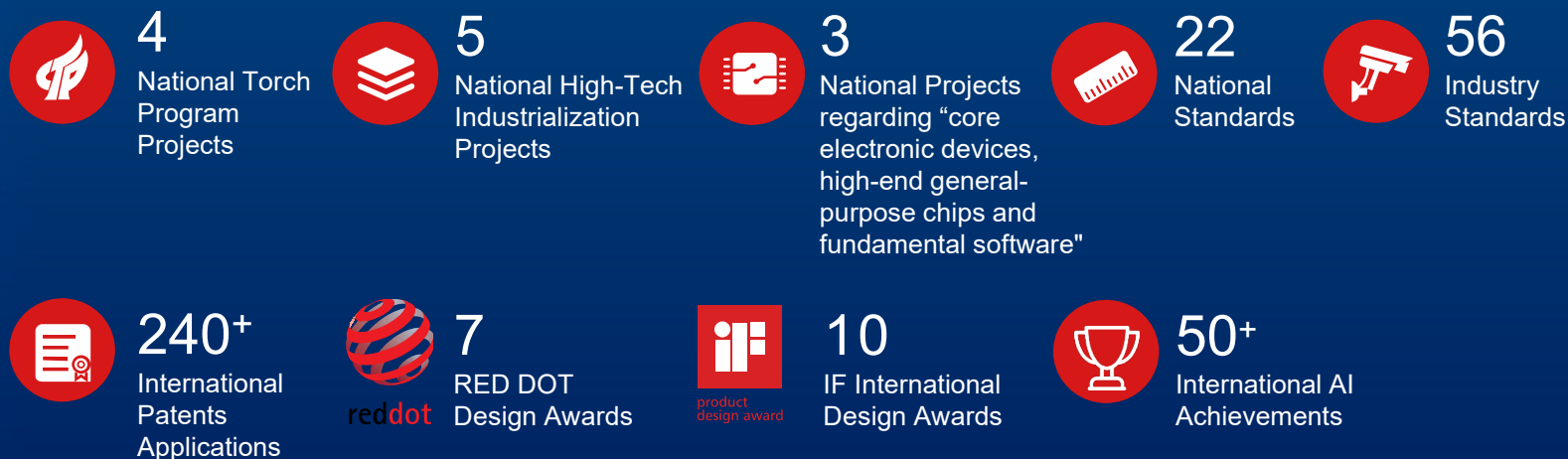
*The USD value of operating revenue is based on the exchange rate on March 22, 2021 (6.5191) for reference purposes only.



HISTORY



- Focused on building core competency and invests about **10%** of its sales revenue into R&D
- Maintained high R&D investment of **CNY 2.998 billion (USD 460 million)** in 2020, with **Over 50%** employees engaged in R&D



5 Institutes

- **Advanced Technology Institute**
AI and cutting-edge technology research
- **Big Data Institute**
Cloud computing, cloud storage, big data technology research
- **Central Institute**
Core technology and new field technology research
- **Cyber Security Institute**
Safety compliance system construction & security technology research
- **Smart City Institute**
Theoretical research and implementation of new smart cities & government digital transformation

*The USD value of operating revenue is based on the exchange rate on March 22, 2021(6.5191) for reference purposes only.

SERVICE



With professional, fast, and end-to-end delivery and service capabilities, Dahua Technology has established an **integrated business center, operation and maintenance service center, in-depth design center, technical service center, training certification center, and customer service center** to provide global customers with delivery and other services throughout the solution's life cycle, creating a world-leading efficient and professional delivery and service platform.

Global Service Network

Dahua Technology provides users around the world with a multi-dimensional service network of headquarters, branch offices, and authorized service stations, which aims to improve service experience, user perception, and overall user satisfaction.

Full Lifecycle Delivery and Service System

With an efficient global professional service platform supported by four major systems, Dahua Technology provides customers with efficient, standard, professional and end-to-end delivery and services. It covers consulting and design, integrated delivery, maintenance service, system optimization and professional technical support, continuously creating service value for customers.



100 +
Spare Parts
Centers



8,000+
Project Managers &
Technical Service Staff



2,000+
Service Partners



5-Star
National Product
After-sales Service
Certification



Excellent
Information System
Construction & Service
Capability



Level 1
Professional Contracting
of Electronics & Intelligent
Engineering



Level 2
National ITSS
Certification



ISO20000
International
Certification



Level 1
Design, Construction &
Maintenance Capability in
Security Engineering

INNOVATIVE BUSINESS

With its deep understanding of the customers' diversified demands, and several years of experience in the smart IoT field, Dahua Technology actively explores new areas including machine vision & AMR, video collaboration, smart unmanned aerial vehicles (UAVs), smart fire control, automotive technology, smart storage, smart security check, smart display and control, etc., in order to provide more complete solutions to its customers worldwide.



01 MACHINE VISION & AMR



Zhejiang HuaRay Technology focuses on machine vision and mobile robot R&D, production and sales, and has industry leading techniques in image optimization, recognition algorithm, navigation and positioning. Products and solutions of the company are widely used in logistics, automotive, 3C, new energy and pharmaceutical industries. Its visual products include industrial cameras, intelligent cameras, 3D cameras and lenses, which are mainly used for code reading and recognition, defect detection, measurement, and positioning. Its mobile robot products covers latency, traction, forklifting, and sorting, which are mainly used in logistics warehouses and material handling.

02 VIDEO COLLABORATION



Huachuang Vision's mission is to "Make Communication Beyond Distance", with a focus on the design, R&D, production, sales and technical services of audio and video conferencing systems. Independent R&D of a comprehensive range of conferencing products includes video conferencing hardware terminals, software terminals, conference cameras, omnidirectional microphones, conference multi-point control units, conference management systems, cloud video platforms, etc. It also provides solutions for industry video conferencing uses, including executive meetings, distance learning, tele-medicine, tele-finance, remote help, and emergency command systems. The company has perfectly inherited the innovative gene of Dahua Technology. The technical R&D team accounts for 60% of employees at Dahua, and the company continues to increase allocation of expenses on product technology R&D.

03 SMART FIRE CONTROL SMART DRONE



Zhejiang Hovfree focuses on the R&D, sales, training and service support of intelligent UAV and intelligent robot. Based on audio and video technology of Dahua Technology, it integrates advanced navigation flight control, platform stabilization, power system, open communication, display control, active safety, and other core technologies in order to provide professional solutions for industry customers. Its products have been widely used in emergency command, forest fire prevention, road inspection, environmental monitoring, etc.

04 SMART Cities SOLUTIONS



Wisualarm is a fire prevention products and solutions provider. Leveraging on the technological advantages in video analysis, cloud computing, big data, smart IOT, etc., Wisualarm provides fire prevention and fire extinguishing services to help cities achieve comprehensive fire management. Based on various business scenarios, Wisualarm brings customers a wide range of products and solutions with a fire management software, which can be applied on building, energy, retail, banking, education and other industries.

INNOVATIVE BUSINESS



05 AUTOMOTIVE Transmission TECHNOLOGY



With video as its core, Zhejiang Huaruijie Technology is engaged in smart driving business, providing advanced automotive electronics products and solutions to the world, and actively expanding automotive's before and after market. Its products cover a full range of on-board cameras, on-board terminal hosts, active safety products, auxiliary driving devices, panoramic 360 viewing system, etc. They have been widely used in freight logistics, public transport, school buses, sanitation trucks and other application scenarios.



06 SMART STORAGE



Dahua Memory focuses on the R&D, manufacturing and sales of storage products, and serves the consumer market with standards that meet the high requirements of the industry. The company keeps innovating and researching in the storage field, and provides advanced memory card, SSD, U-Disk, PSSD, DRAM, NAS and other products to the world. Its business covers consumer, enterprise and industrial markets, and meets the needs of various application scenarios, providing a new storage experience to its world-wide users.



07 SMART SECURITY CHECK



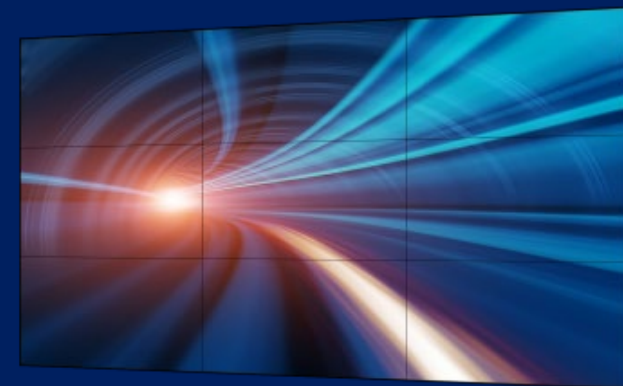
As a supplier of equipment and systems for smart security check, Zhejiang Dahua Iscan Technology Co., Ltd integrates the security industry with a myriad of technologies such as artificial intelligence, big data and Internet of Things, providing reliable, convenient and advanced smart security check equipment and services to its global customers. Their products have been widely used in logistics, transportation, factories, shopping malls, museums and other public places.



08 SMART DISPLAY AND CONTROL

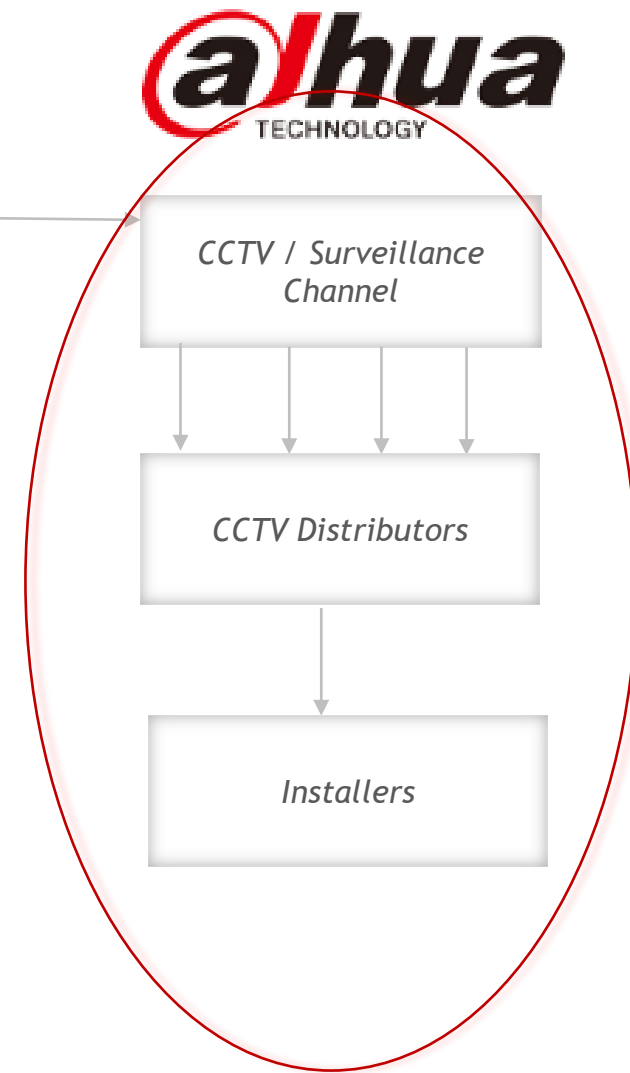
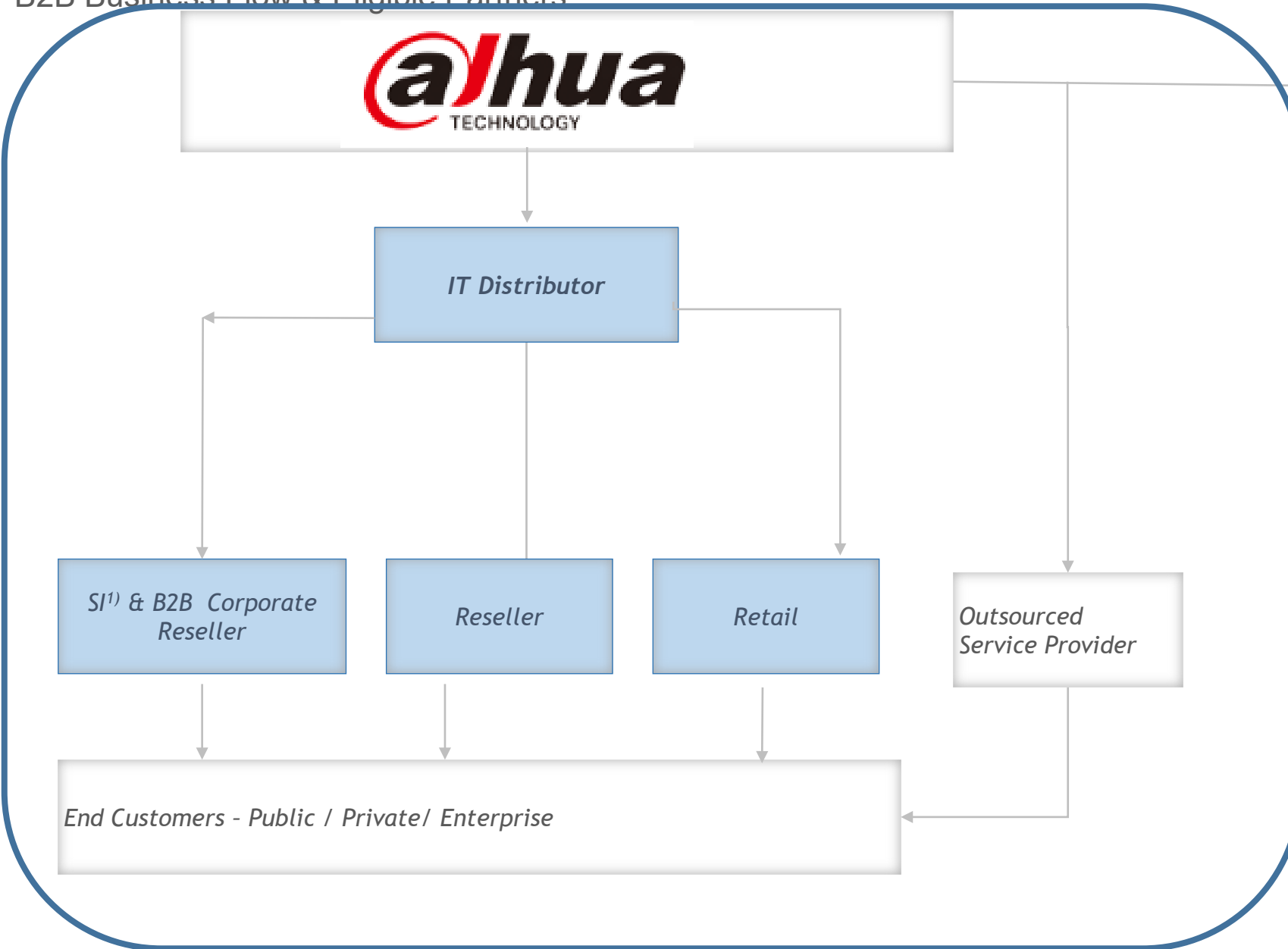


With more than ten years of industry technology experience, the Dahua Images and Graphics Business Global Department has developed a full range of product line covering LED displays, LCD displays, DLP rear projection splicing, information display devices, control systems, etc. Focusing on product planning, marketing, project delivery and after-sales services, it constantly puts emphasis on products and solutions related to display and control. It has also contributed several success stories in the industry.



Channel Market Approach

B2B Business Flow & Eligible Partners



Images and Graphics SMART SOLUTIONS





Monitor | Product Family – Digital Signage Solution



Ultra Series



DHI-LM32-S200



DHI-LM43/49/55-S200



DHI-LM43/49/55-S400



DHI-LM65-S400

Positioning:

- Project-type products;
- Interface facing down;
- Rich interface types;

Light Series



DHI-LM19/22/24/27-L200



DHI-LM22/24-H200



DHI-LM22/24-F200



DHI-LM32/43-F200



DHI-LM43/50/55/65-F400

- plastic shell material;
- Support 7*24H;

Commercial Series



DHI-LM19-A200



DHI-LM22/24/27-A200



DHI-LM22/24/27/32-B200

- IT pipelines;
- for commercial office scenarios;
- Anti-blue light design, eye-protective

Gaming Series



LM24-E200



LM27-E200



LM32-E200C

- IT pipelines;
- For personal home and Internet bar ;
- High refresh rate($\geq 144\text{HZ}$) ;
- Immersive experience.

Monitor Size



Product Family



≈ 1 coin

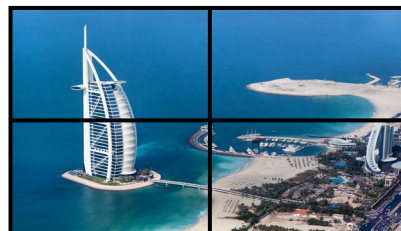


≈ 2 coins



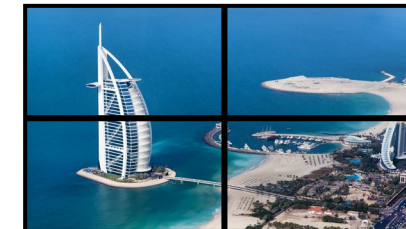
LS550UEH-UG
LS550UEM-UG

~22.11



LS550UDH-UG
LS550UDM-UG
LS550UDM-UF

~22.11



LS550UCM-UF
LS490UCM-UF
LS460UCM-UF

~22.11

- High-end
- commercial project
- Factory-calibrated color between and in each screen
- DP daisy chain

LS550UEH-EG
LS550UEM-EG

NEW

LS550UDM-EF

NEW

LS550UDH-EG
LS550UDM-EG

NEW

DHL460UDH-ES
DHL460UDM-ES
(Delisting, without
daisy chain)

LS460UDM-EF

NEW



LS650KCM-EF



LS550UCM-EF

LS490UCM-EF

LS460UCM-EF

- commercial project
- Factory-calibrated color between each screen
(Under development)
- HDMI daisy chain

LS550UCM-BF

LS460UCM-BF

~22.8

- commercial channel
- Cost-effective

Series

Ultra

Essential

Basic

0.88mm

1.7/1.8mm

3.5mm

Bilateral Seam

L.E.D. – Naked Eye 3D



Fine Pixel Pitch LED

CH Series



SS Series



EH Series



SH Series



Delisted

Indoor Fixed LED

EH Series



SH Series



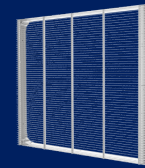
Indoor-Out Door Rental LED

Stadium LED

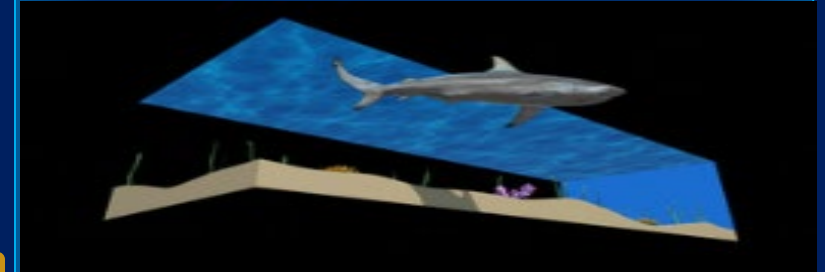
EH Series



Transparent



Present and Future



- Immersive and realistic content
- Bigger imagination space, deeper memory
- Stronger attraction to see and stay

3D Content and Immersive Content



Product Family (TV)

Smart TV Series



DHI-LTV32-SA/SNX00



DHI-LTV40-SA/SNX00



DHI-LTV43-SA/SNX00



DHI-LTV50-SA/SNX00



DHI-LTV55-SA/SNX00



DHI-LTV65-SA/SNX00



DHI-LTV75-SA/SNX00

Frameless

DTV Series



DHI-LTV22-LDX00



DHI-LTV24-LDX00



DHI-LTV32-LDX00



DHI-LTV40-LDX00



DHI-LTV43-LDX00



ATV Series



DHI-LTV22-LNX00



DHI-LTV24-LNX00



DHI-LTV32-LNX00



DHI-LTV40-LNX00



DHI-LTV43-LNX00



Size

MPS

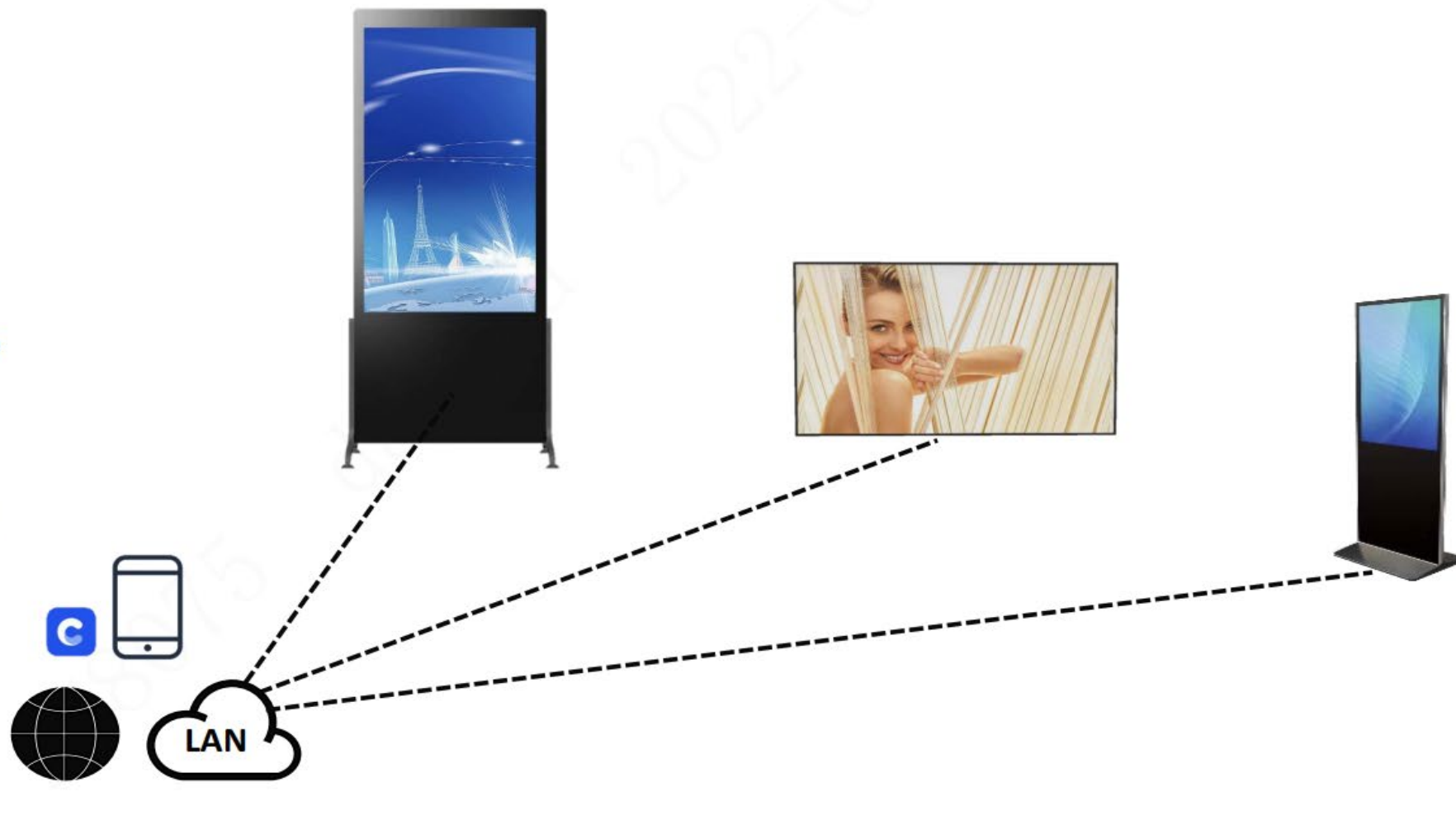
Platform Promotion V3.2

Media Publish System



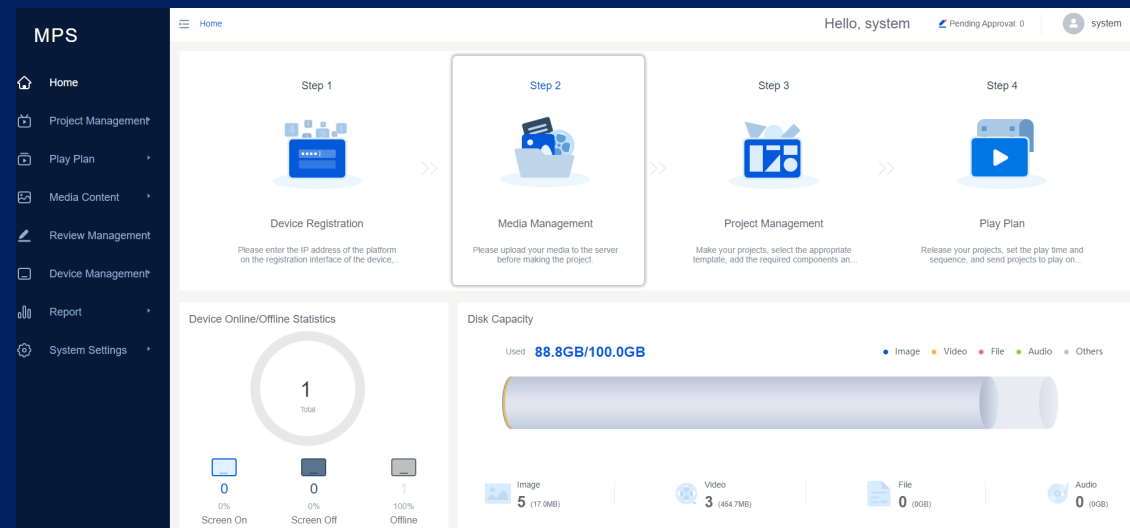
Dahua MPS platform realizes point-to-multipoint monitor management , including content, volume, schedule, etc.

MPS platform software



■ MPS V3.2

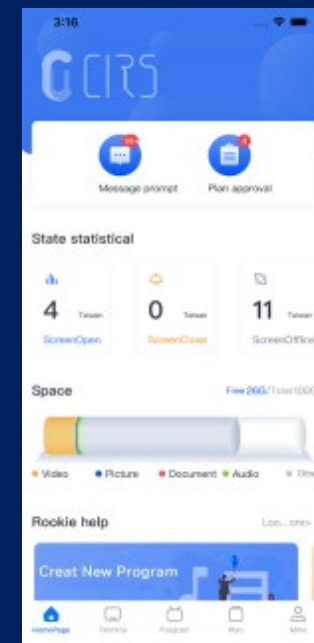
- New design of UI &UE;
- Enrich the elements of program production, which is easy to use and can improves the program quality;
- Can customize the program template, support U disk import and export, reduce the investment of customized development;



■ MPS Mobile (IOS & Android)

- Support mobile app management to improve the user experience and bid controlling ability;
- Support program production, terminal information display, authority approval, terminal timing switch on and off;
- Compatible with mainstream mobile phones in the market;

(PS: The APP based on MPS version 3.2)



Dahua DeepHub



Intelligent Whiteboard

Touch screen support smooth writing
Multiple writing modes



Wireless Projection

One-tap projection
Multi-terminal projection



Video Conference

Built-in 4K camera & mic (Optional)
Video conferencing software



File Management

Easy content save and sharing
Local document and media file support



LCD Touch Display

Sharp & clear display vs projectors
4K for clear presentation & media playback



Conference Cameras



USB PTZ Camera
DH-VCS-C5B0



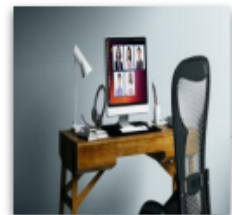
USB Tracking Camera
HT-SD500



HD Conference Camera
DH-VCS-C7A0

Solutions

hitroLink



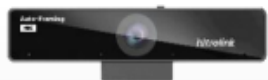
Personal space



1080P Webcam (AF)
HTI-UC325



1080P Webcam
HTI-UC300



4K Webcam (AF and
Auto framing)
HTI-UC390



Headset
HT-ER200



1-5 people room



All-in-one USB
Camera
DH-VCS-C4B0



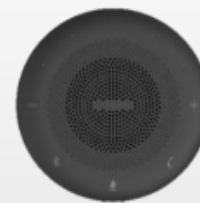
5-10 people meeting room



65" UHD Smart Interactive Whiteboard



4K UHD Integrated
USB Camera
DH-VCS-C5A0



Wired/Bluetooth Microphone
DH-VCS-MCA400(optional)



8-15 people meeting room



86" UHD Smart Interactive
Whiteboard



USB PTZ Camera
DH-VCS-C5B0



Wired/Bluetooth Microphone
DH-VCS-MCA400



Smart City Solution

Smart City Development In China

2008, start the idea of "Smart Earth"

2012, China starts the program to build 90 smart cities

2015, China brings the idea of "New Smart City concept"

2019, smart city become full coverage for all industry, and support each other

2008-2011
Digital

2012-2015
Network

2016-2018
Information

2019
Smart

Driven by industry application

Key technology: Digitalization, transmission

Feature: the constructions are separated into different industries, small and dispersed

Driven by new technology

Key technology: Wireless, Network, Centralization

Feature: it's the explore period based on government requirement, more unified

Driven by requirements

Key technology: AI, Big data

Feature: Different cities focus on their own pain points, and tend to build a unique solution only for their city

Driven by requirements

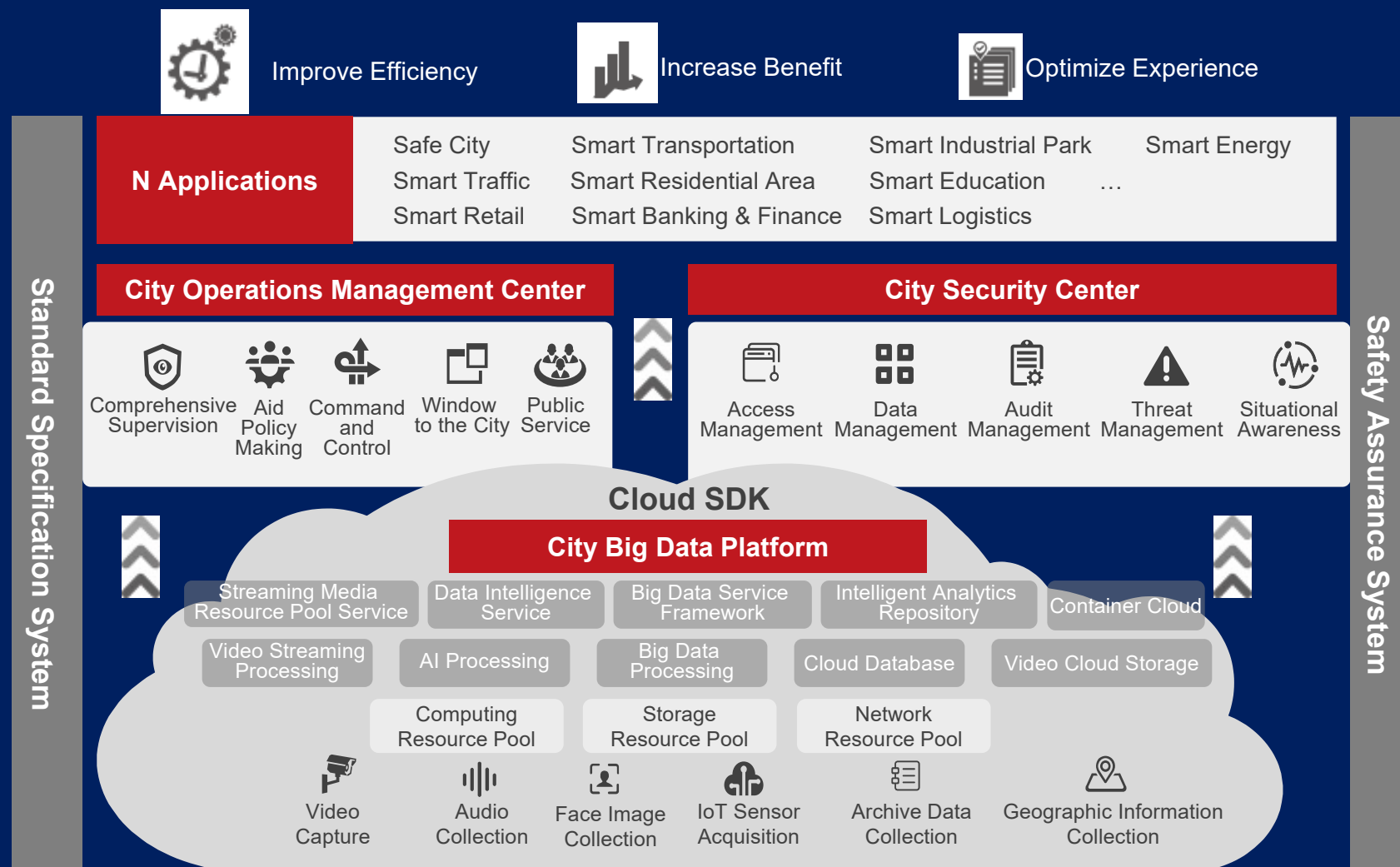
Key technology: Data mining, cloud

Feature: a platform responsible for safety, traffic, transportation, parking, etc. all types of city management

HEART OF CITY (HOC)

Dahua Heart of City (HOC) is a smart city development engine supported by **Full Sensing, Full Intelligence, Full Computing, and Full Ecosystem (4 Full) capabilities**. It realizes the construction of a “**1 platform, 2 centers, N applications**” (1+2+N) new smart city framework for application at the city, industry, and commercial level.

Dahua Heart of City features a top-level design based on giving cities ‘4 Full’ capabilities to drive urban development, achieving goals to “**improve efficiency, increase benefit, optimize experience**,” and in-depth design principles based on “**solving customer business pain points and creating economic, social, and business value** through scientific and orderly construction and operation from a global perspective.”



Product Ability

25+ Product lines

Thousands different products

Dedicated design for every detail

alhua
TECHNOLOGY

Sensing

Powerful video capturing products for low light, long distance, and other complex situation

Thermal imaging, radar detection, multi-lens products beside video method

RFID, ID, 5G products to rich the sensing elements

Special industry products such as machine vision, speed testing, drone, etc. to enhance ultra performance

Platform

Video platform products cover projects from 100 to million channels, more than 100+ protocols to connect different products

Transmission products like switch, wireless are specially designed for video and picture transmission

IPSAN products for medium and small size project, cloud storage products for large scale project

Command

Splicing LCD video wall is very popular for video monitoring, and small pixel indoor LED are best for command center

Dahua video matrix can control the video display for huge quantity screens and large size LED video wall

Operator desk management system can make the team operation flexible and smooth

AI & Big Data

Multi-billion level size of database management

Smart algorithm can cover different scenarios and all type of complex requirements

AI enabled products covers from camera side, edge side and center side, AI ability can even be called from a shared AI pool, to reach the maximum of the AI efficiency



AI Ability

Big Data Ability

- Face Detection
- Face Recognition
- Video Structure
- People counting



Camera

- General Video Connect
- AI data collection
- Data process
- Edge AI enable



AI Box

- Center AI process
- Second level result response
- Multi million library



AI Server

- Picture mark
- Behavior mark
- Multi task
- Model analysis



Training Platform

Strong Computing

Sophisticated Algorithm

Body



- Face recognition
- Full body clothes
- Belongings
- Behavior
- movement

Vehicle



- ANPR
- Vehicle type
- Vehicle color
- Driving behavior
- Driver behavior

Motorcycle



- Number plate
- Bike Color
- Passenger
- Driver clothes
- Helmet

Location



- Traffic situation
- Perimeter
- Entrance
- Public area

SMART TRAFFIC MANAGEMENT

Taking video-centric AI technology as its core, the Dahua Smart Traffic Management Solution deeply integrates with traffic management tasks to enhance traffic control and command operations capabilities. This solution fully empowers traffic management reforms and assists traffic management departments in building a "4-in-1" modern service mechanism led by intelligence research, efficient flat command operation, precise maneuvering, as well as real-time supervision and control. It drives the transformation of traffic management mechanisms and improves traffic management capabilities.

SOLUTION HIGHLIGHTS

Ease Traffic Congestion

This solution integrates AI, radar, video and other IoT sensing technologies to serve various congestion scenes at urban intersections, sections, viaducts, etc., realizing a closed loop of business value including blockage point positioning, blockage cause analysis, congestion remedy and evaluation, and efficiency improvement of road traffic.

Traffic Safety Warning

For situations involving big trucks' blind spots while turning right, oncoming traffic on mountain corners, and bad weather, the solution applies video object sensing to actively detect early warnings and reduce traffic accidents, helping traffic management to transform from post-disposal to pre-prevention.

Urban Green Parking

With high demand for temporary parking in urban areas, the solution launches "Green Parking", which integrates on-site parking, timing, and online reminders to provide free parking within the prescribed time. This alleviates the problem of short-term parking and improves convenience for the residents.

Smart Control of Non-motor Vehicle

By integrating video, RFID and other IoT sensing methods, the solution conducts real-time and dynamic supervision of more than 7 types of illegal behaviors related to using electric vehicles including: running red lights, overload, not wearing helmets, and parking over the line. It significantly enhances the traffic safety awareness of drivers and maintains the urban traffic order.

KEY CASES



28 ASEAN Summit Traffic Project, Laos

During the 28 ASEAN Summit, Dahua Technology assisted Laos in building an intelligent traffic management system. The company helped achieve effective control of vehicles entering and exiting the core areas of the summit. With detection system in place for over speeding, red light violations, etc., it effectively reduced local traffic violations and ensured safe travel.



Traffic Enforcement Project, Serbia

Dahua Technology has successively deployed smart traffic systems in 5 important cities in Serbia since 2015. This solution solved light pollution problems and developed Serbian and EU multi-country license plate recognition algorithms to control the vehicles entering and leaving EU countries. It also includes a customized collection, transmission, storage and management mechanisms for the Serbian traffic system.



Ulaanbaatar Traffic Project, Mongolia

Dahua Technology provided a sophisticated ITS solution consisting of ANPR system, violation detection and speed measurement systems to cover 28 roads and 8 intersections in Ulaanbaatar. The requirements analysis, solution design and project delivery only took three months to complete, overcoming the challenges of extreme climate conditions and lack of technical support. This solution provided the local transportation department of Ulaanbaatar with a sustainable, growing, and well-maintained security system.

SMART PARKING

The Dahua Smart Parking Solution consists of roadside parking, garage parking, urban parking grading guidance systems, urban parking platforms, mobile apps and other subsystems. It provides convenient parking services for car owners, advanced parking operation systems for enterprises, and long-term scientific parking management for city operators.

SOLUTION HIGHLIGHTS

Optimizes Experience: Saves 70% of time looking for a parking space, providing convenience to drivers.

Increases Benefit: Reduces labor cost by 80%, and increases operating efficiency by 80%.

Improves Efficiency: Controls traffic violations, alleviates traffic congestions, helps to enhance the image of the city and promotes the construction of smart cities.

KEY CASES



Residential Apartment Underground Parking Project, Serbia

The Dahua Smart Parking Solution provides the residents of this apartment complex with convenient entry & exit experience by utilizing ANPR technology, and also allows quick location of available parking spaces for visitors. The solution includes more than 100 parking detection cameras and 4 access cameras, enabling effective parking management and CCTV surveillance operation in the area.



Airport Parking Project, Denmark

The Dahua Smart Parking Solution reduces searching time for available parking spaces and provides the management with clear overview of the 1,217 parking spaces in the parking garage. Dahua Technology's easy-to-use parking software, PMS PRO, allows the garage management to monitor occupancy, assess accidents, search through data and export reports. At the same time, the integration of ANPR and video analytics makes it easier for drivers to find available parking spaces and locate their vehicle in the massive parking garage.



Shopping Mall Parking Project, Czech Republic

As one of the most prosperous shopping malls in Prague, the shopping mall has a total of 2,240 parking spaces. Dahua Technology provided its garage with 925 parking spot detection cameras, 5 find-my-car kiosk, 20 guidance screens, etc., which greatly enhance the parking experience of drivers, and help the shopping mall attract more customers.

Smart Forest - Fire Detection Solution



● Early fire detection



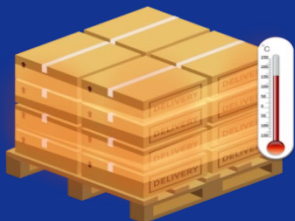
Temperature increment



Smoke

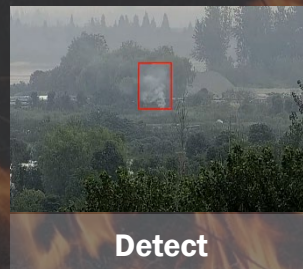


Fire



Special Scenarios

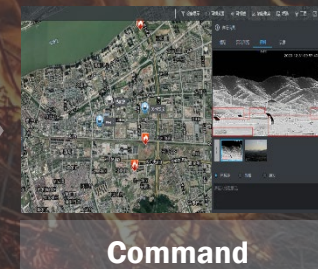
Thermal Rapid Detection



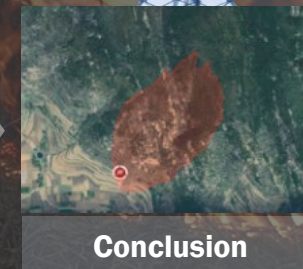
Detect



Locate



Command



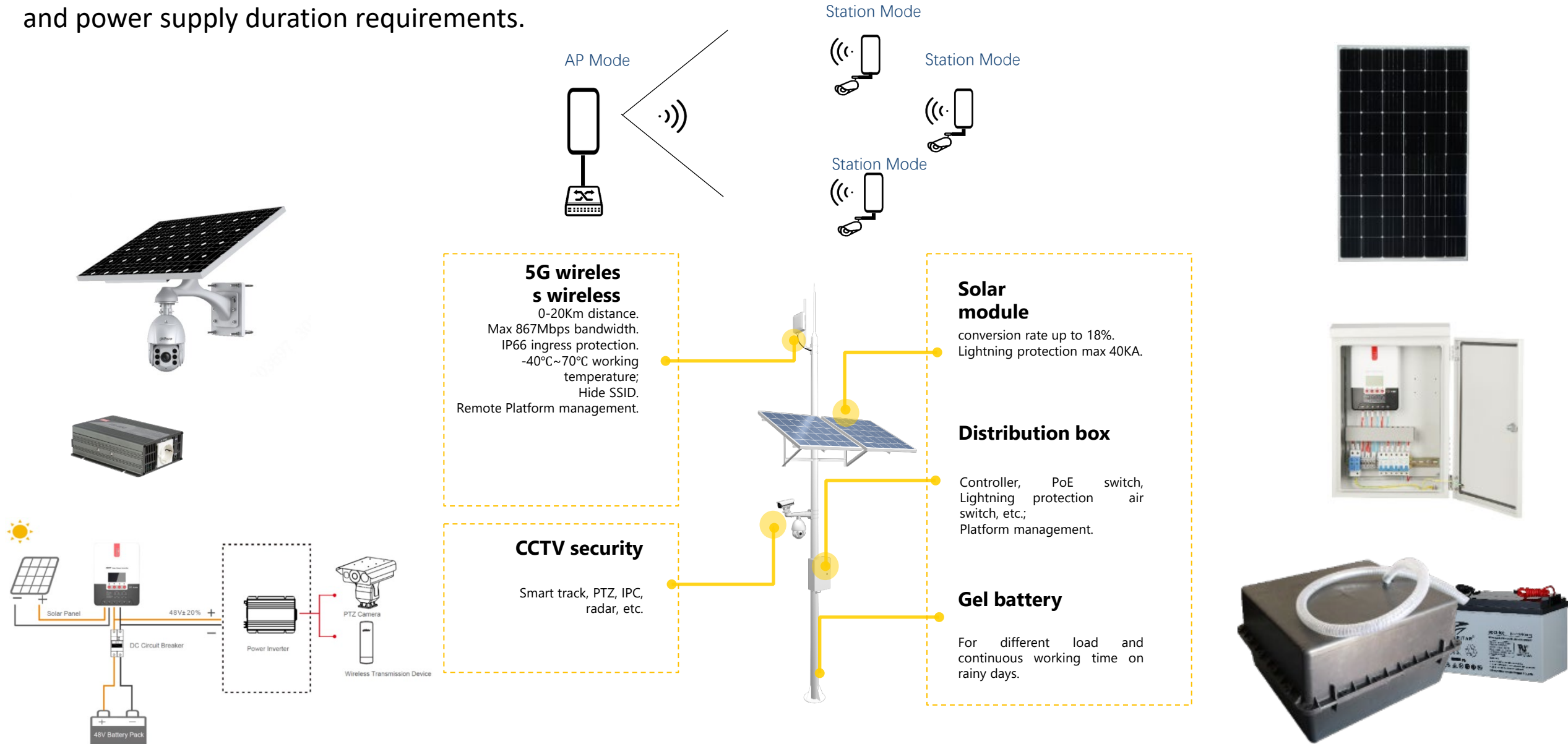
Conclusion

- ✓ Rapid detection of early sources of fire.
- ✓ Save manpower cost and improve efficiency.
- ✓ Avoid fire damage to the natural ecology.

Forest Fire Detection Solution



Different from the traditional way, the off-grid scheme uses solar energy and wireless transmission technology to meet the needs of monitoring deployment outdoor. it solves the problems of wiring, construction period and maintenance, Sperate system can arbitrarily combine according to customer needs to meet the requirements of different power supply equipment and power supply duration requirements.



DSS Platform



Homepage

Live View 1



0



Live View

View live video. Supports multiple-window preview, PTZ control, snapshot, instant playback, tour and etc.



Record Playback

Supports central or front-end device's record playback, fast and slow playback, locking record and etc.



Emap

Visual display of device installation area, supports map preview, playback, alarm and etc.



Event Center

Listing events by event level, you can process alarm and search history alarm.



Video Wall

Decoding live video and video record to video wall, supports video tour.



Download Center

Multiple methods to export record file from central server and front-end storage device.



Personnel Management

Add user and details, supports to issue card, private password and other authorization.



Access Control

Remote control of A&C device, supports door group authorization and unlock rule setup.



Attendance Management

Personnel shift arrangement, record the attendance information and generate attendance reports.



Video Intercom

VDP device call and management, supports to send message to VTH.



Visitor Management

Visitor appointment and registration, supports temporary permission management, visit record search.



Alarm Host

Zone arm/disarm, subsystem arm/disarm, Zone and subsystem status monitor.



Face Recognition

Supports real-time face detection and comparison, history face detection and comparison searching and etc.



Business Intelligence

Providing the reports via integrating business data to help people making business decisions.



Flow Analysis

Easily know the passenger flow via people counting and passenger distribution via heatmap.



Thermal

Supports Getting real-time heatmap, point, line and pane temperature analysis and heatmap exporting.



ANPR

Supports real-time license plate recognition, vehicle passed record searching and etc.



Traffic

Supports vehicle violation searching, vehicle average speed measurement and generating traffic flow reports.



Target Detection

Human, motor vehicle, non-motor vehicle detection, extracting object attributes information.



Entrance

Access license plate snapshot, support parking lot config and vehicle white list management.



Radar Smart Track

Position speed dome direction via target detected by radar, to track target, alarm for zone and etc.

Camera

Network

Event

> Video Detection

> Audio Detection

> Smart Plan

> IVS

> Face Detection

> People Counting

> Video Metadata

> ANPR

> Alarm

> Abnormality

Storage

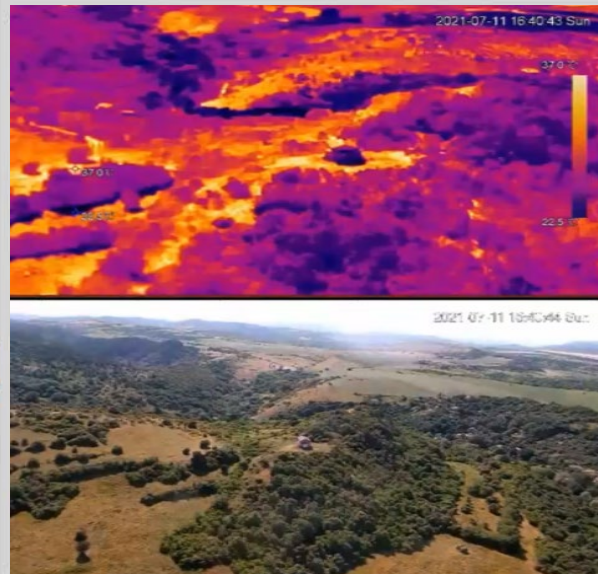
System

Information

Scene Set

Picture

Report



Detect Region

Draw

Clear

Exclude Re...

Draw

Modify

Clear

Target filter

Max Size

8191 * 8191

Draw Target

Min Size

0 * 0

Clear

Pixel Counter

0 * 0

Draw Target

<input checked="" type="checkbox"/>	No.	Name	Rule Type	
<input checked="" type="checkbox"/>	1	VM-1	People	

Parameter Setup

☒ People Flow Sta...

☐ OSD

Clear

Period

Setting

☒ Relay-out

1 2

Alarm Delay

10

s (10~300)

Global Setup

☒ Privacy Protection

Human Body

Face

Human Body

☒ Overlay Target Frame

☒ Face

☒ Hu...

☒ Non-mot...

☒ Motor V...

☐ Face Enhancement

☐ Remove Duplic...

Snap Face Image

One-inch photo

☐ Enable Face Exposure

Face Target Brightn...

50

Face Exposure Del...

5

Scene

Distant View

Privacy Protection-DSS PRO

Action Landing | AR Panorama



谢谢你

THANK YOU