

/ I EF<sup>®</sup>

# Ookla's Perspective on 5G & Fiber Networks Performance

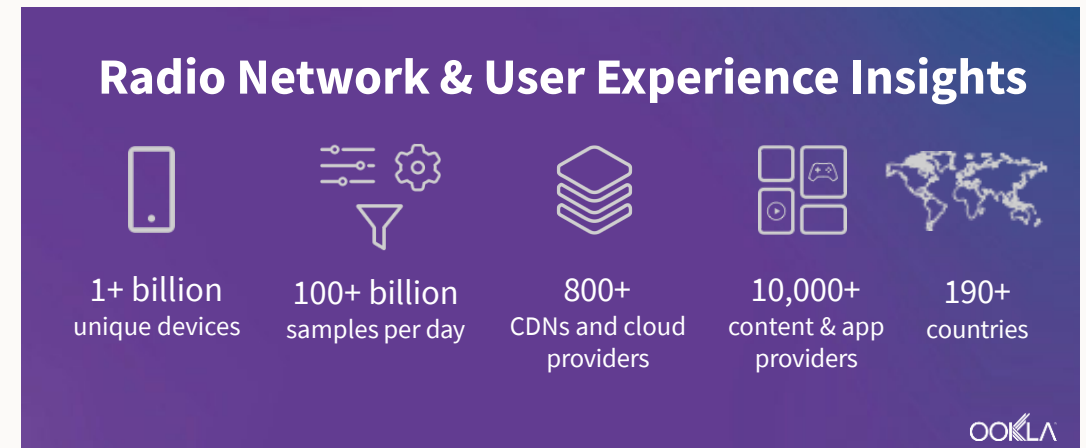
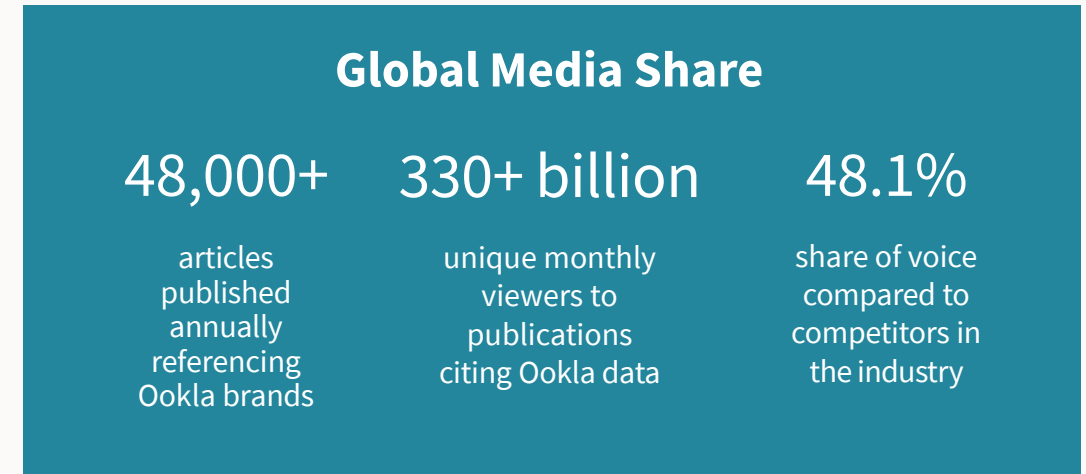
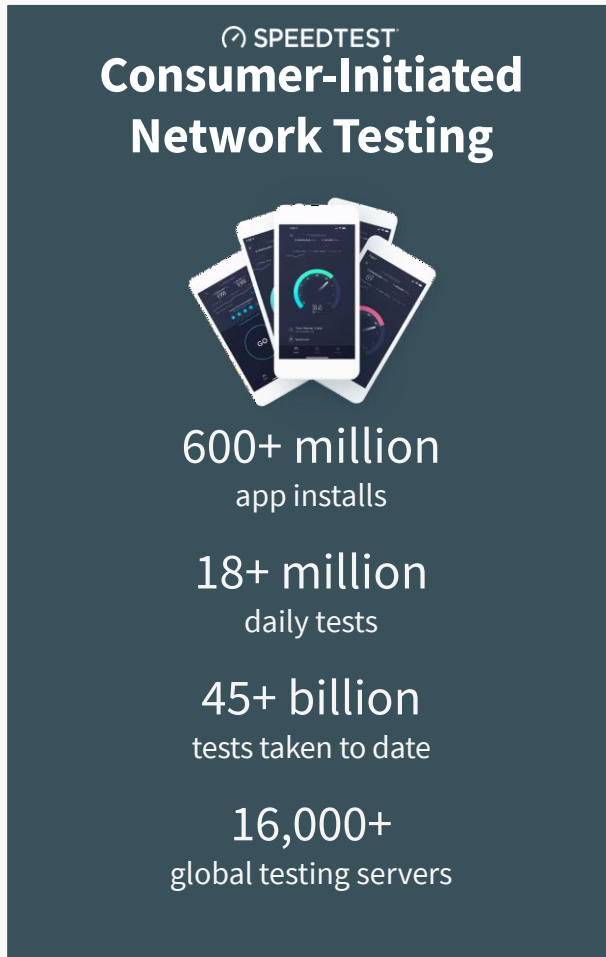
Infocom World 2022 Fiber & 5G Highways: DigitAll Greece!  
Athens, Greece - 29 November 2022

Kostas Panagiotopoulos  
Account Manager - Ookla  
[kostas@ookla.com](mailto:kostas@ookla.com)



# Ookla is a bridge between consumers and the industry

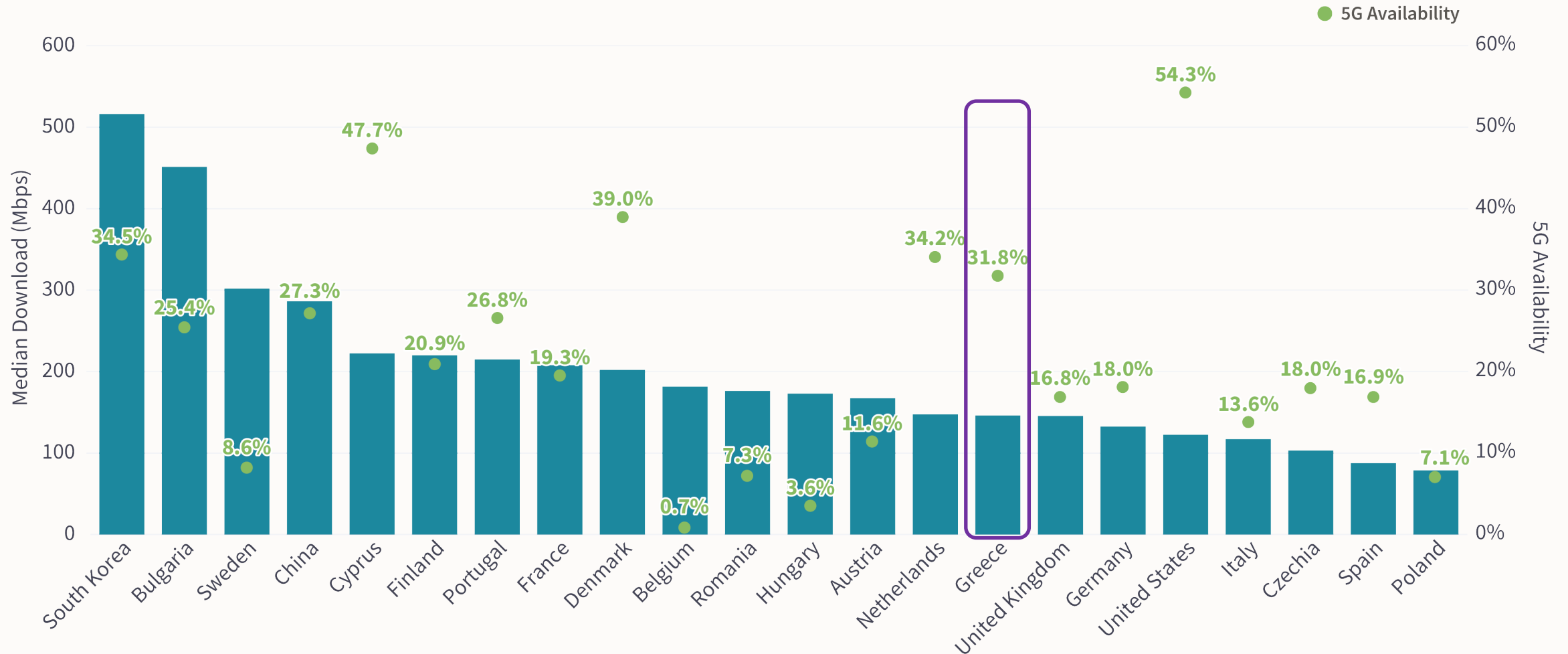
Consumer engagement and crowdsourcing at global scale, leading in consumer brand trust and recognition



# Fast 5G and Good 5G Availability Do Not Always Go Hand in Hand

Median 5G Download Speed and 5G Availability Across Europe with Select International Comparison

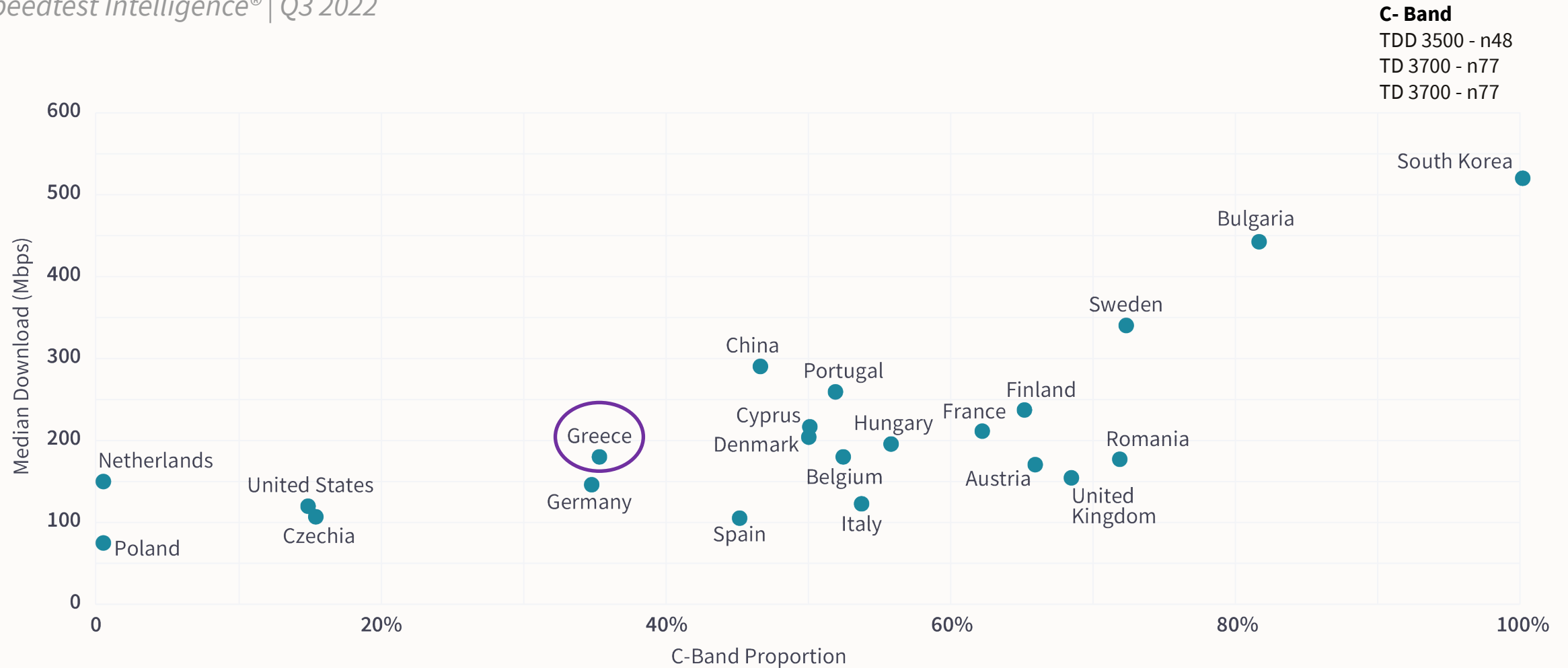
Speedtest Intelligence® | Q3 2022



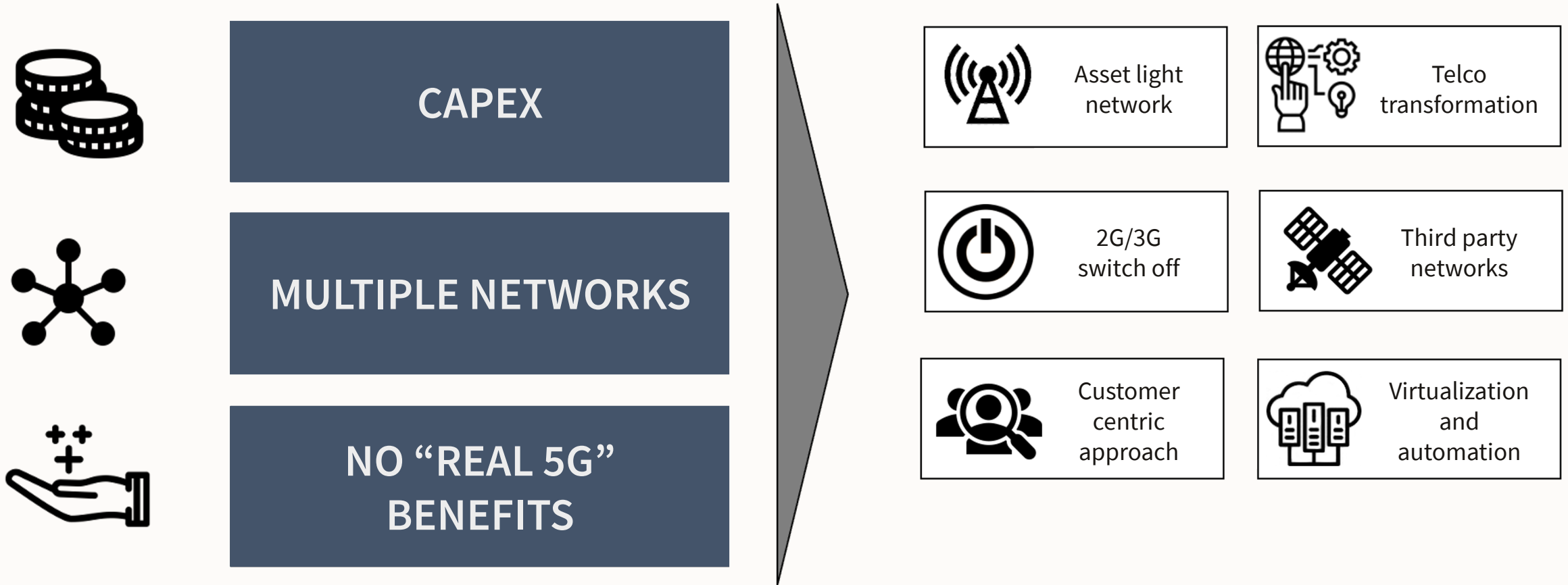
# Larger the Share of C-Band Spectrum, Faster the 5G Download Speed

Relationship Between C-Band Spectrum and Median 5G Download Speed

Speedtest Intelligence® | Q3 2022



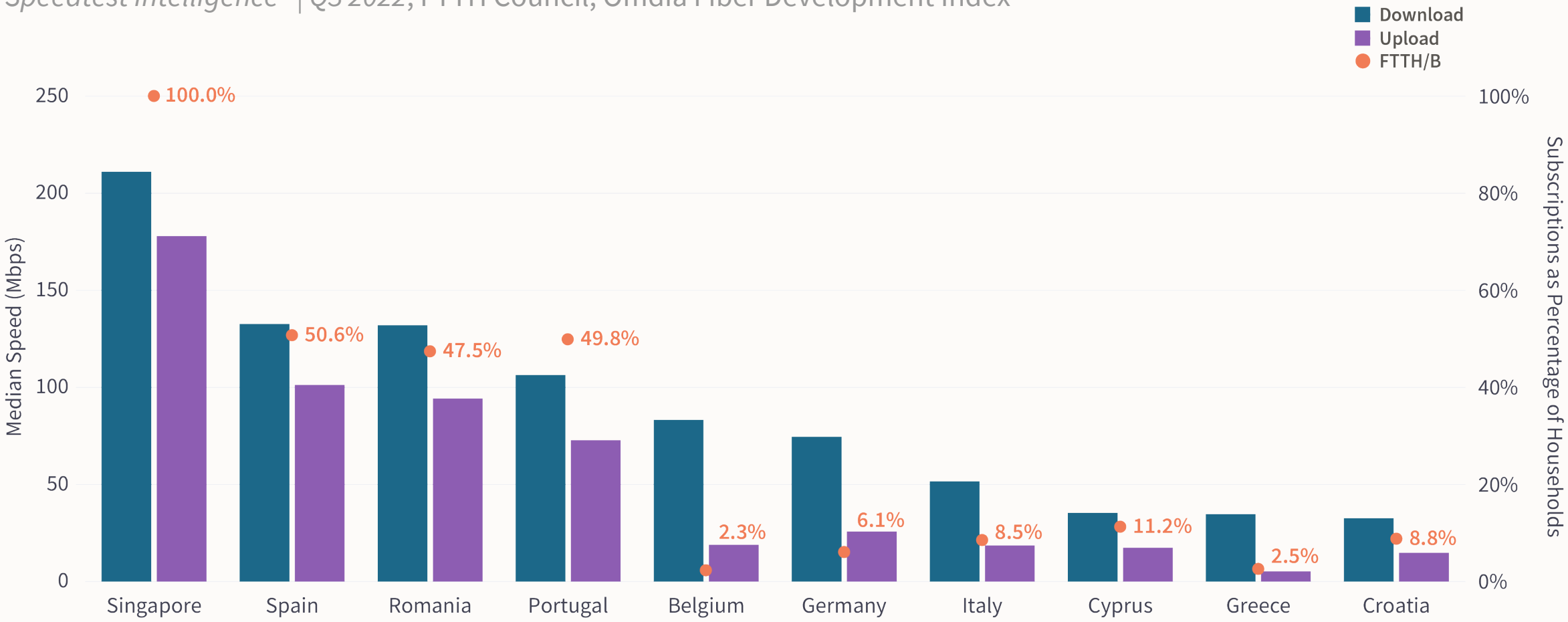
# Looking Ahead: 5G Monetization Taking Priority



# Fiber Improves Customer Experience

Median Fixed Broadband Performance Across European Countries and International Comparison and FTTH/B Subscriptions as Percentage of Households

Speedtest Intelligence® | Q3 2022, FTTH Council, Omdia Fiber Development Index



# Multiple Factors Determine Country's Speeds



**Infrastructure**



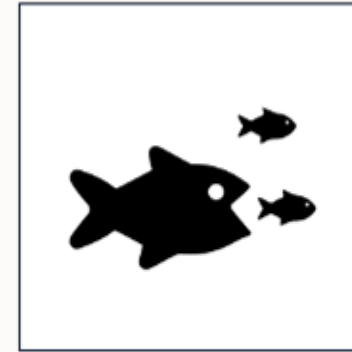
**Affordability**



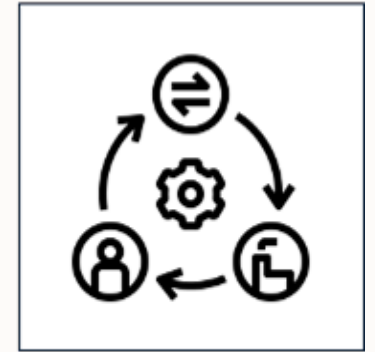
**Equipment**



**Regulation**



**Competition**



**End-user:  
skills & demand**



# What level of service is available?

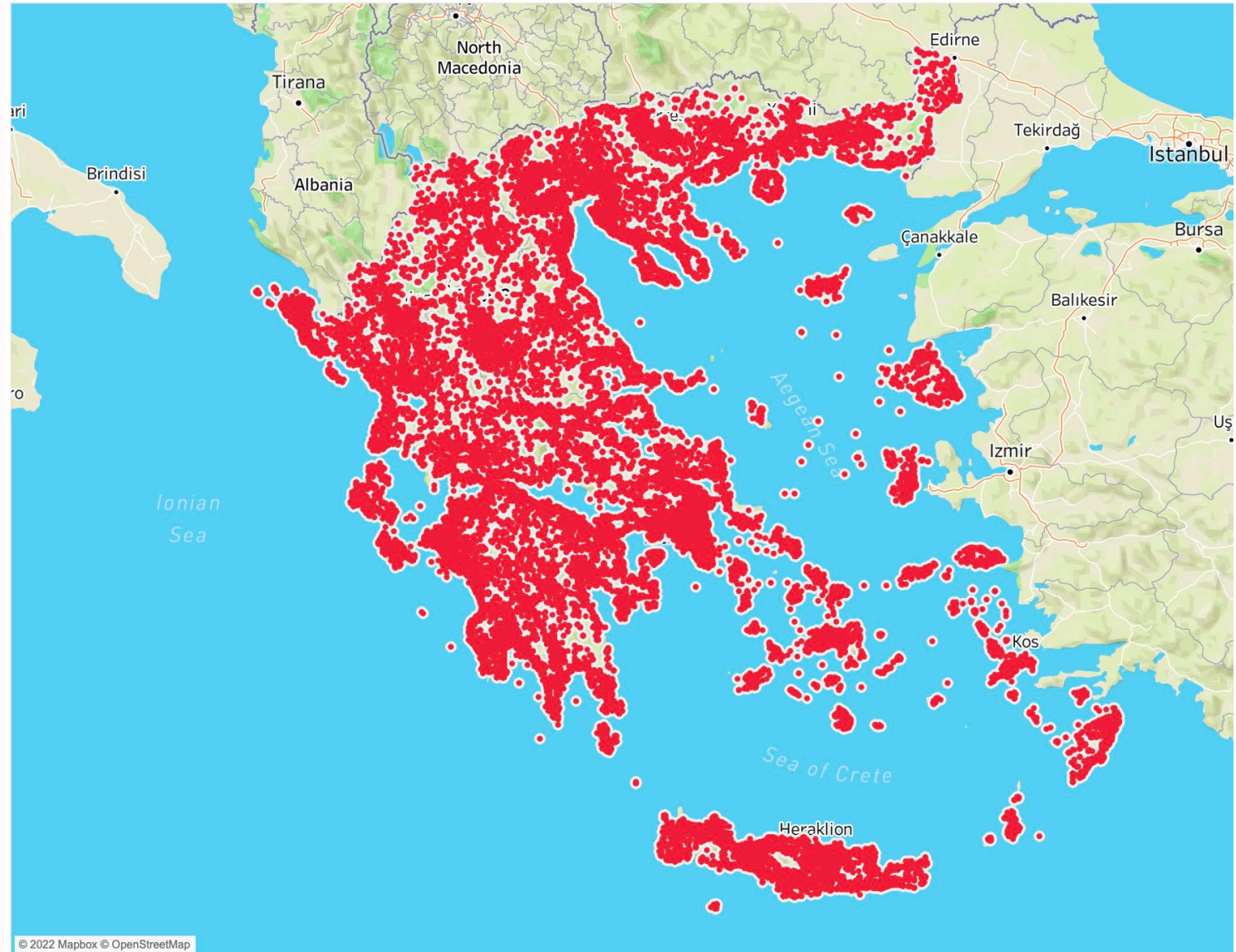
## Greece

Example: Data from Jan 2022 – Nov 2022

- Fixed operators tested via native mobile and desktop Speedtest applications
- Filtered for records with GPS-provided longitude and latitude
- Layering with the fastest tests on top provides evidence for where broadband speeds are being met and where they are not

Speedtest®  
Measurements

Less than 25 Mbps ●





# What level of service is available?

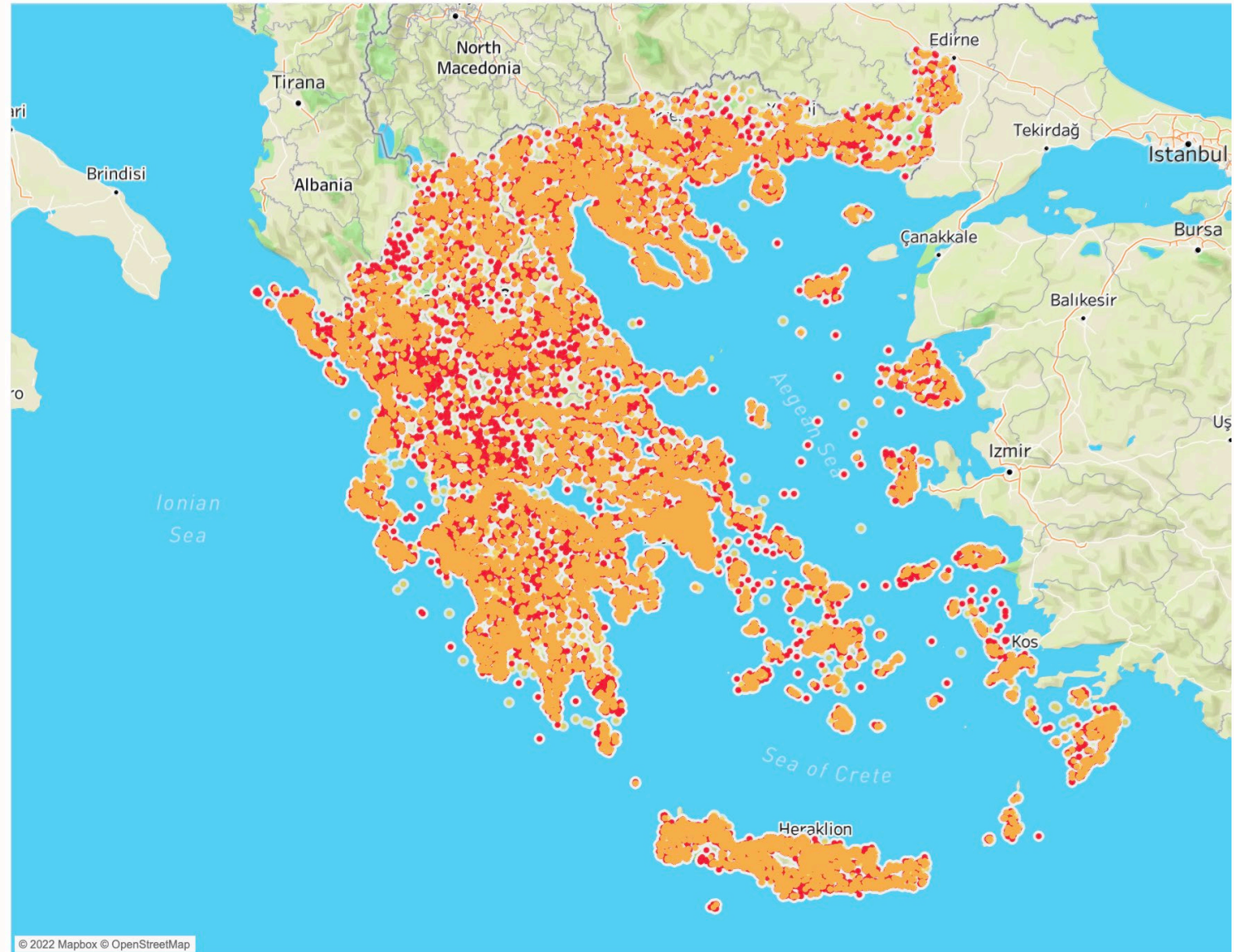
## Greece

Example: Data from Jan 2022 – Nov 2022

- Fixed operators tested via native mobile and desktop Speedtest applications
- Filtered for records with GPS-provided longitude and latitude
- Layering with the fastest tests on top provides evidence for where broadband speeds are being met and where they are not

Speedtest®  
Measurements

Less than 25 Mbps ●  
25 - 100 Mbps ●



# What level of service is available?

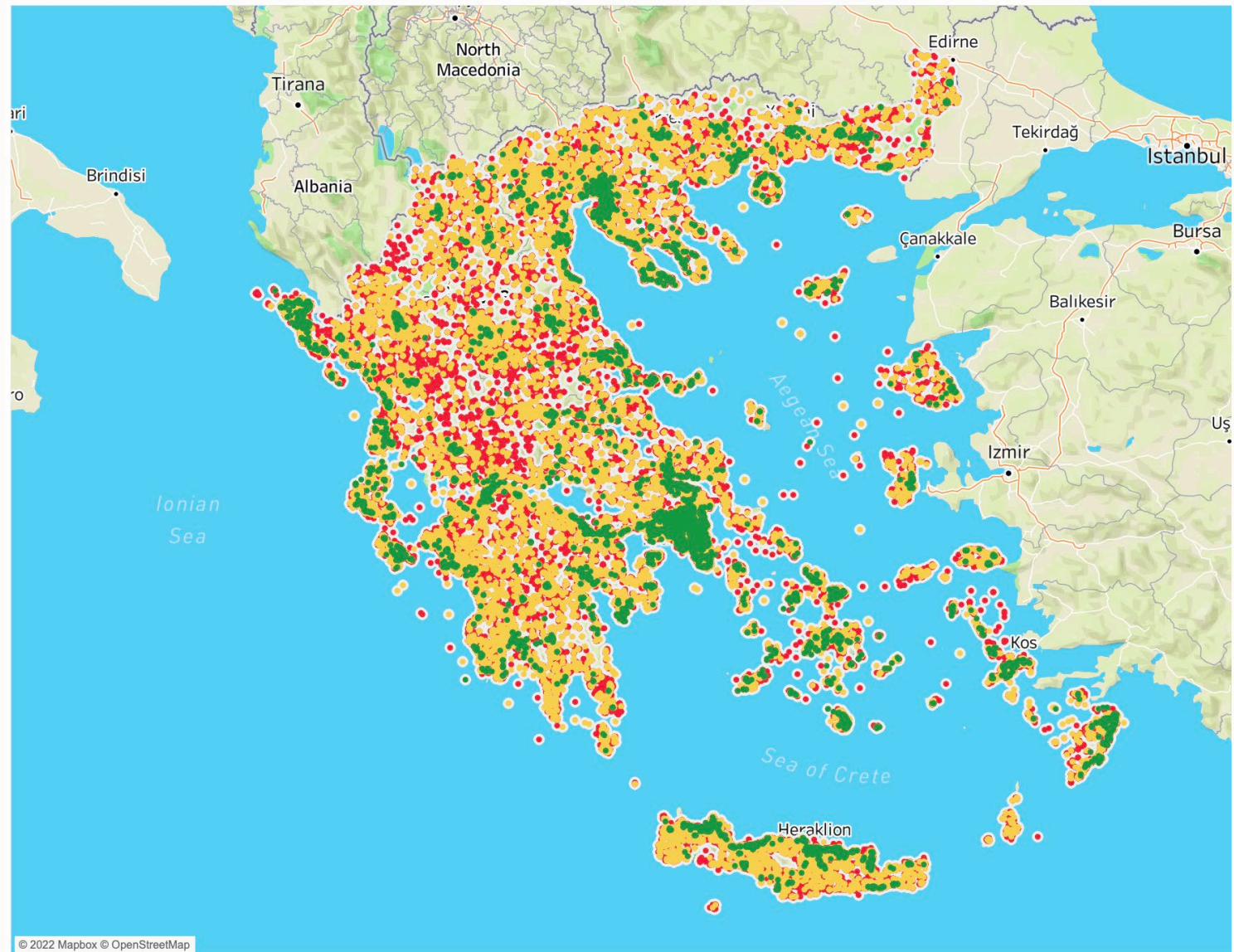
## Greece

Example: Data from Jan 2022 – Nov 2022

- Fixed operators tested via native mobile and desktop Speedtest applications
- Filtered for records with GPS-provided longitude and latitude
- Layering with the fastest tests on top provides evidence for where broadband speeds are being met and where they are not

Speedtest®  
Measurements

Less than 25 Mbps	●
25 - 100 Mbps	●
100 - 300 Mbps	●





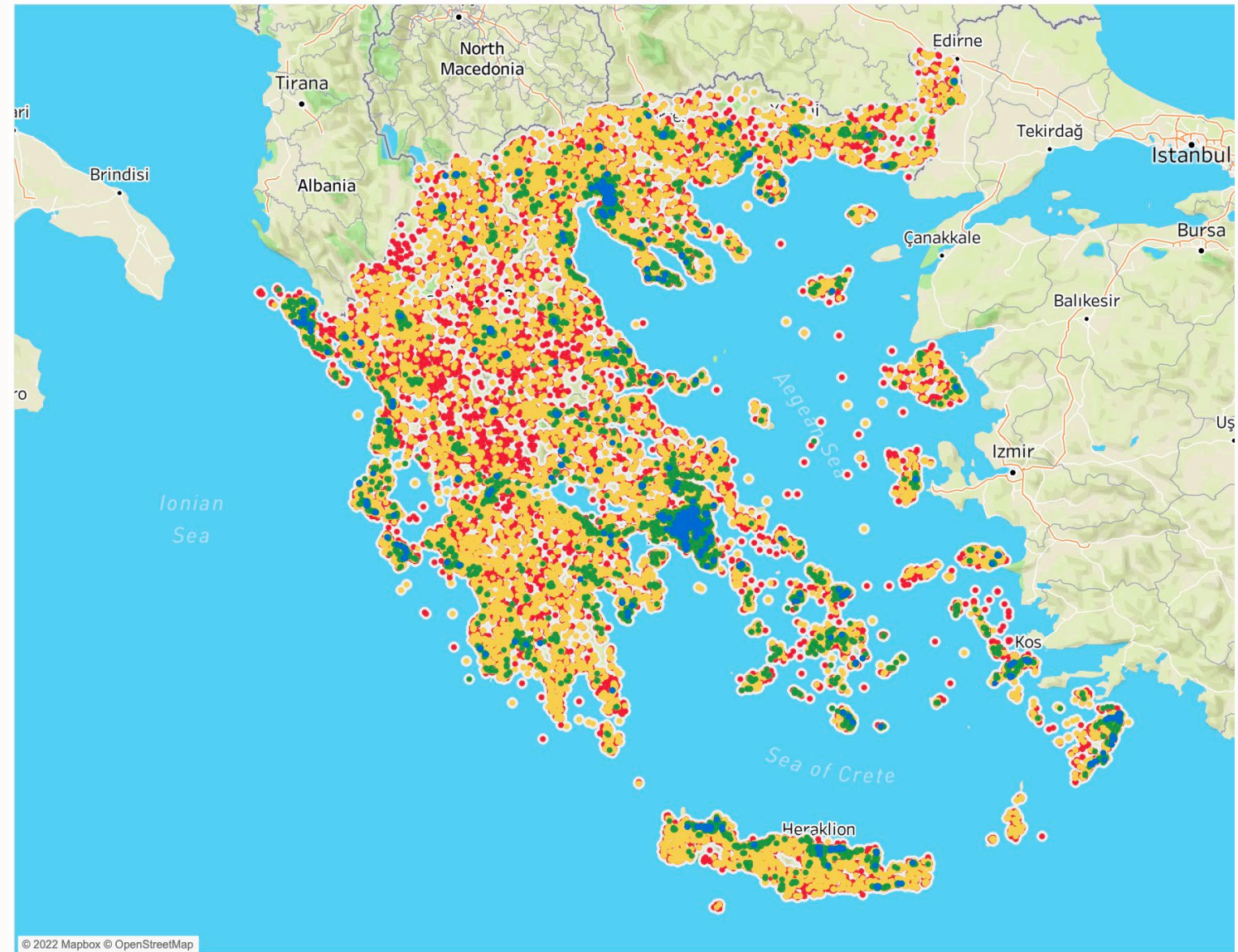
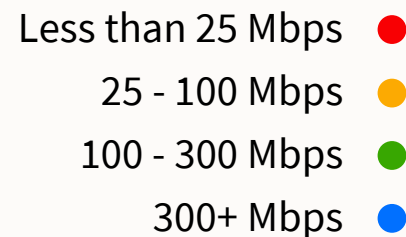
# What level of service is available?

## Greece

Example: Data from Jan 2022 – Nov 2022

- Fixed operators tested via native mobile and desktop Speedtest applications
- Filtered for records with GPS-provided longitude and latitude
- Layering with the fastest tests on top provides evidence for where broadband speeds are being met and where they are not
- Areas with significant evidence of being underserved can be targeted for investment

Speedtest®  
Measurements





# Ookla's Perspective on 5G & Fiber Networks Performance

Infocom World 2022 Fiber & 5G Highways: DigitAll Greece!  
Athens, Greece - 29 November 2022

Kostas Panagiotopoulos  
Account Manager - Ookla  
[kostas@ookla.com](mailto:kostas@ookla.com)

