

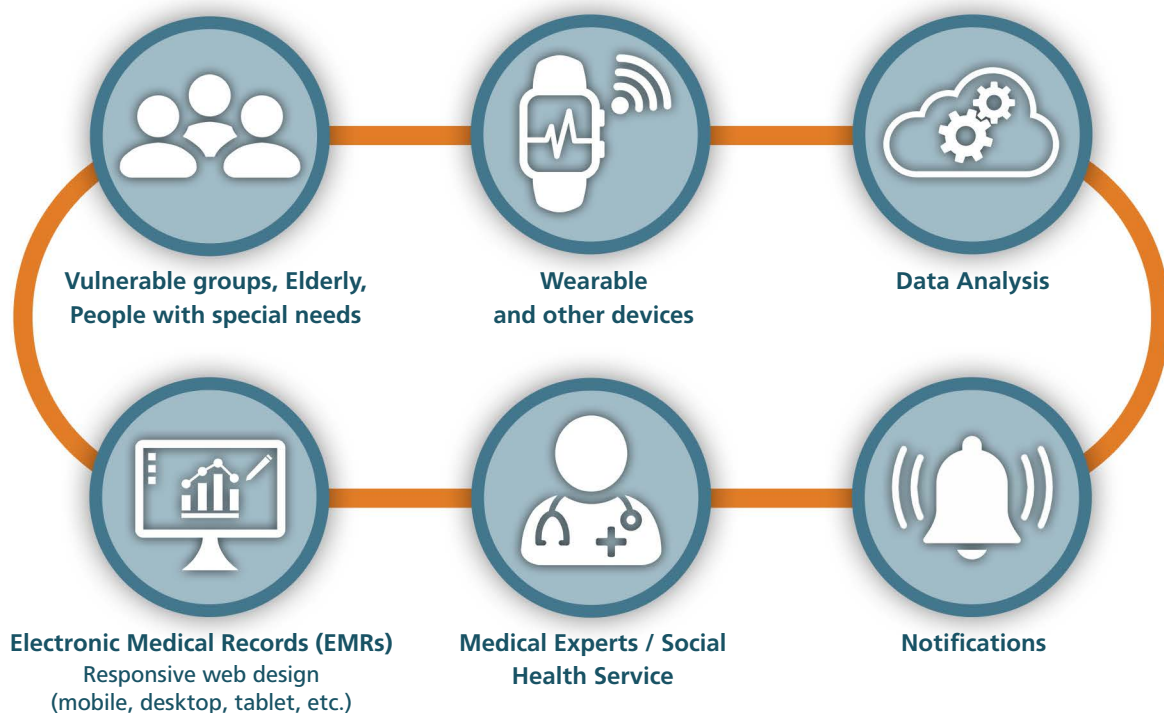


# STARLIT

WINGS STARLIT Digital Solutions for Health and Wellness

## End-to-End Solution for Digital Health and Wellness

- Real-time vital signs monitoring and predictions for individuals and groups of patients
  - Analysis of main vital signs for the detection and prediction of anomalies
  - Geofencing and fall detection technology
- Notifications to medical experts, patients, and their relatives in case of:
  - Heart rate, blood pressure, oxygen saturation, body temperature or blood glucose are critical or are out of range (based on certain predefined thresholds)
  - Recorded values show a trend towards a potential problematic situation leading to health emergencies
  - Patient leaves a specific predefined geographical area (geofencing)
  - Falls are detected
- Better and more accessible healthcare



## Wearable Devices

- Vital signs
  - Heart Rate, Cardiac Rhythm (Electrocardiogram/ ECG), Blood Pressure (systolic and diastolic), Oxygen Saturation (SpO<sub>2</sub>), Body Temperature, Blood Glucose
- Other measurements and features
  - GPS (geofencing), SOS buttons (emergency calls), Altitude, Acceleration, Activity, etc.

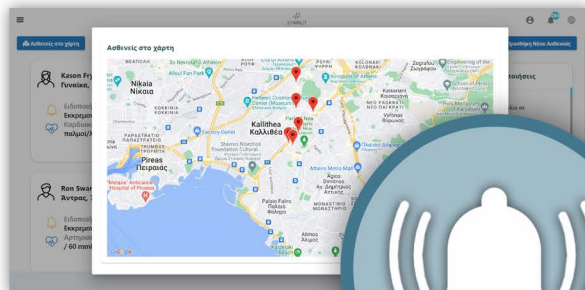
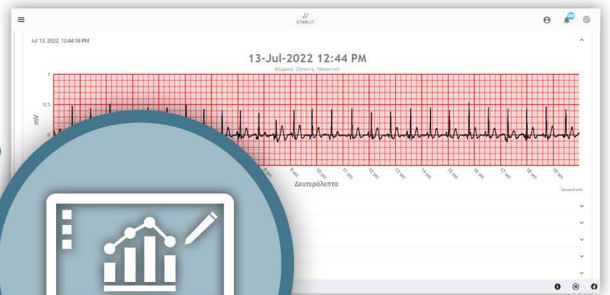


## Intelligence – Data Analysis

- Anomaly detection
  - ECG analysis for the detection of cardiovascular diseases
  - SpO<sub>2</sub> analysis for the detection of respiratory events
- Personalised predictions
  - High blood pressure analysis for the prediction of hypertension.
  - Blood glucose analysis for the early detection of hypoglycemia.
- Geofencing

## Electronic Medical Records (EMRs)

- Data Visualisation
- Real-time vital signs monitoring and predictions
- Patients on a single page & on the map
- Notifications/Alerts management
- Chat and Video Conferencing
- Responsive web design (mobile, desktop, tablet, etc.)



## Notifications to medical experts, patients, and their relatives in case of:

- Heart rate, blood pressure, oxygen saturation, body temperature or blood glucose are critical or are out of range (based on certain predefined thresholds)
- Recorded values show a trend towards a potential problematic situation leading to health emergencies
- Patient leaves a specific predefined geographical area (geofencing)
- Falls are detected

## ABOUT WINGS

WINGS exploits advanced technologies, such as Artificial Intelligence, Big Data, Cloud technologies, Telecommunication Networks (4G, 5G, WiFi, Lora, etc.), advanced visualization techniques (Augmented / Conceivable Reality (AR / VR), mobile applications, etc.) aiming to provide extremely reliable solutions that help businesses improve their decision-making processes, expand their knowledge through detailed forecasting and predictive analytics, increase their efficiency and in the end, focusing on customer satisfaction.



Contact / Follow us

WINGS ICT Solutions P.C. Address: 189, Syggrou Avenue, PC: 17121, Athens, Greece

Phone: +30 215 5011 555, Website: <http://wings-ict-solutions.eu>, E-mail: [info@wings-ict-solutions.eu](mailto:info@wings-ict-solutions.eu)