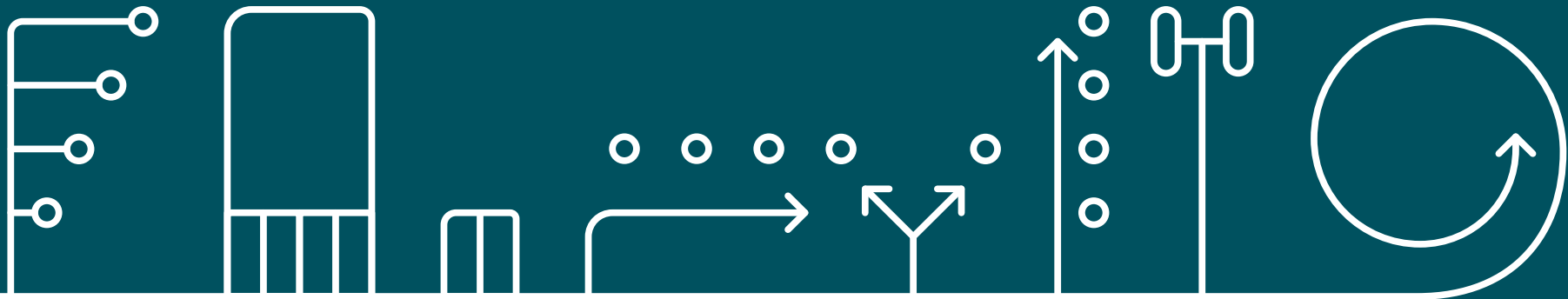




Formerly  Nexans Telecom & Data

We are aginode.



#smartconnection



Agenda

1. Who we are
2. Invest in Greece



Technology & industrial footprint in Europe, Africa & Asia

BELGIUM

Buizingen
LAN Systems
Frameries
Optical Fibre Cables



GERMANY

Mönchengladbach
Active LAN switches
Fibre To The Office

FRANCE

Fumay
Copper Cables
Vrigne-aux-Bois
Accessories &
Connectivity



GREECE

Aghia Marina, Stylida
Optical Fibre Cables



MOROCCO

Nouaceur
Accessories &
Connectivity

A history of innovation

- 1919 Started as Manufacture d'Accessoires de Réseaux Souterrains in Vrigne-Aux-Bois
- 1977 Creation of Opticable fibre cable manufacturing in Belgium
- 1992 Start of LAN cabling systems activity (under the ownership of Alcatel)
- 1994 First factory in China
- 1996 Launch of Cat6 cables (market-first)
- 1999 Launch of LANactive Fibre To The Office switches
- 2000 LAN cabling systems activity becomes Nexans
- 2001 Launch of Cat7 connector GG45™ (market-first)
- 2011 New FTTH production line in Frameries
- 2018 Launch of XPLOER™ (ODF modules)
- 2019 100 years anniversary of Vrigne-Aux-Bois plant
Launch of 5G Indoor cable SxTPTM
Launch of 2nd generation LANsense™ AIM
- 2020 Launch of INFRABIRD™, a solution to secure FTTH street cabinets and Optical Fibre connection
- 2021 New production plant in Morocco for Optical Fibre & Copper accessories & connectivity
DICE Gigaswitch wins Reddot design award



A strong R&D heritage based on services & solutions

4

Dedicated technical centers in Europe, close to our customers

45

FTE high skilled Engineers and technicians

4.7

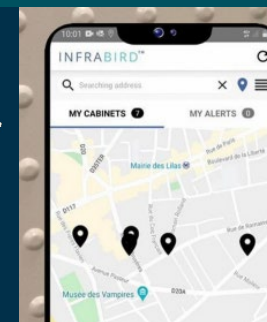
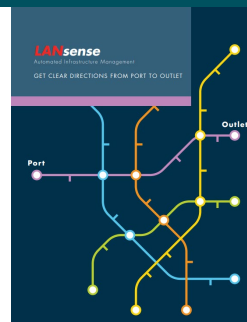
Million euros R&D investments in 2020

10

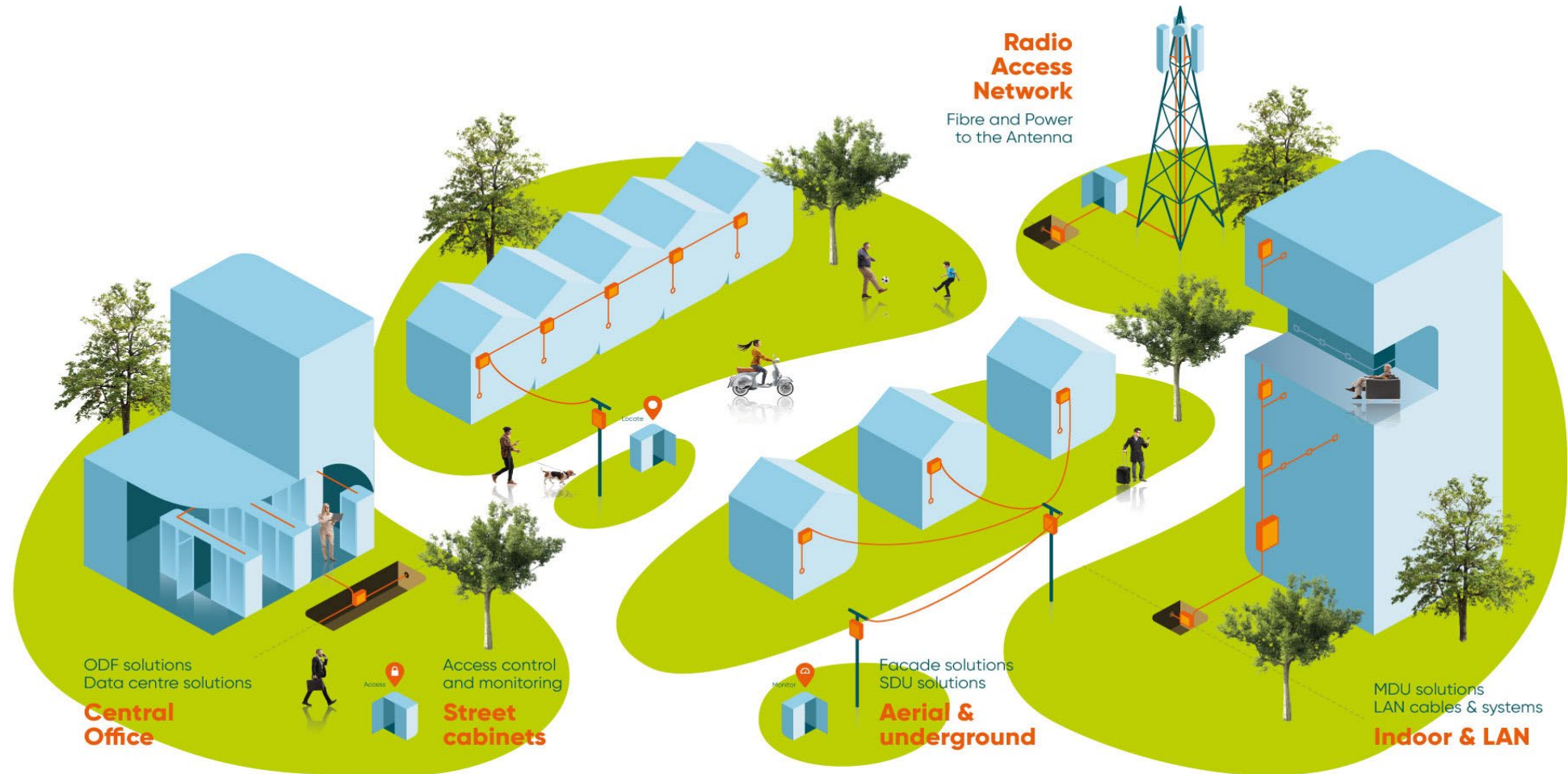
New inventions filed in the last 12 months

35

Active Patents dedicated to telecom & data network technologies



World Class Telecom & Data Solutions



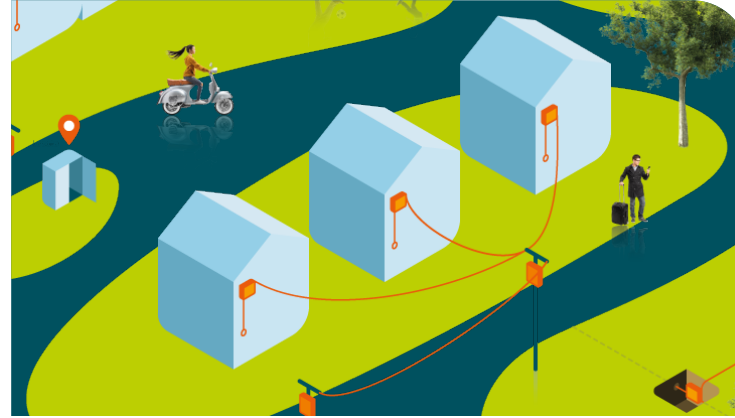
FTTx Networks: Central Office, Outdoor & Indoor solutions



Central Office

Complete range for Central Office applications:

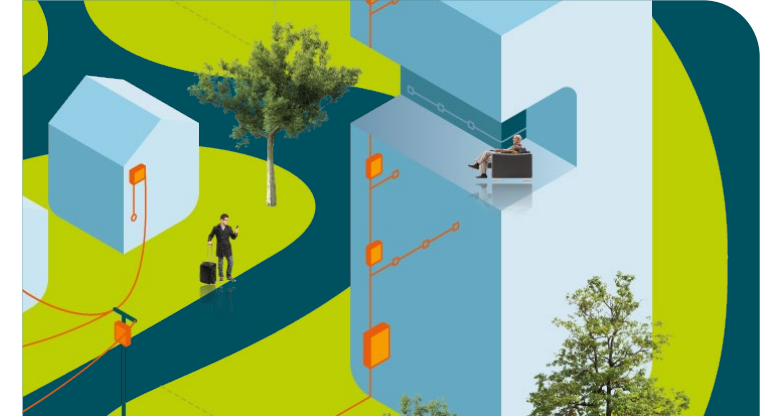
- XPLOER™, OPTeASTAR Racks, cable heads, ODF, patch panels, patch cords
- Solutions adapted to operators' specifications & local usage standards
- Designed for quick installation respecting the high data transmission requirements



Outdoor

Cables, accessories & connectivity for Outside-plant applications from Central Offices to the building

- Specific range for underground (BLACKBOX, BRIGHTOX), aerial (OUTDROP), & Façade (WALLDROP) deployments according to the highest reliable standards (e.g. watertightness, UV resistance)



Indoor

Full solution for Fibre To The Home installations & premise cabling:

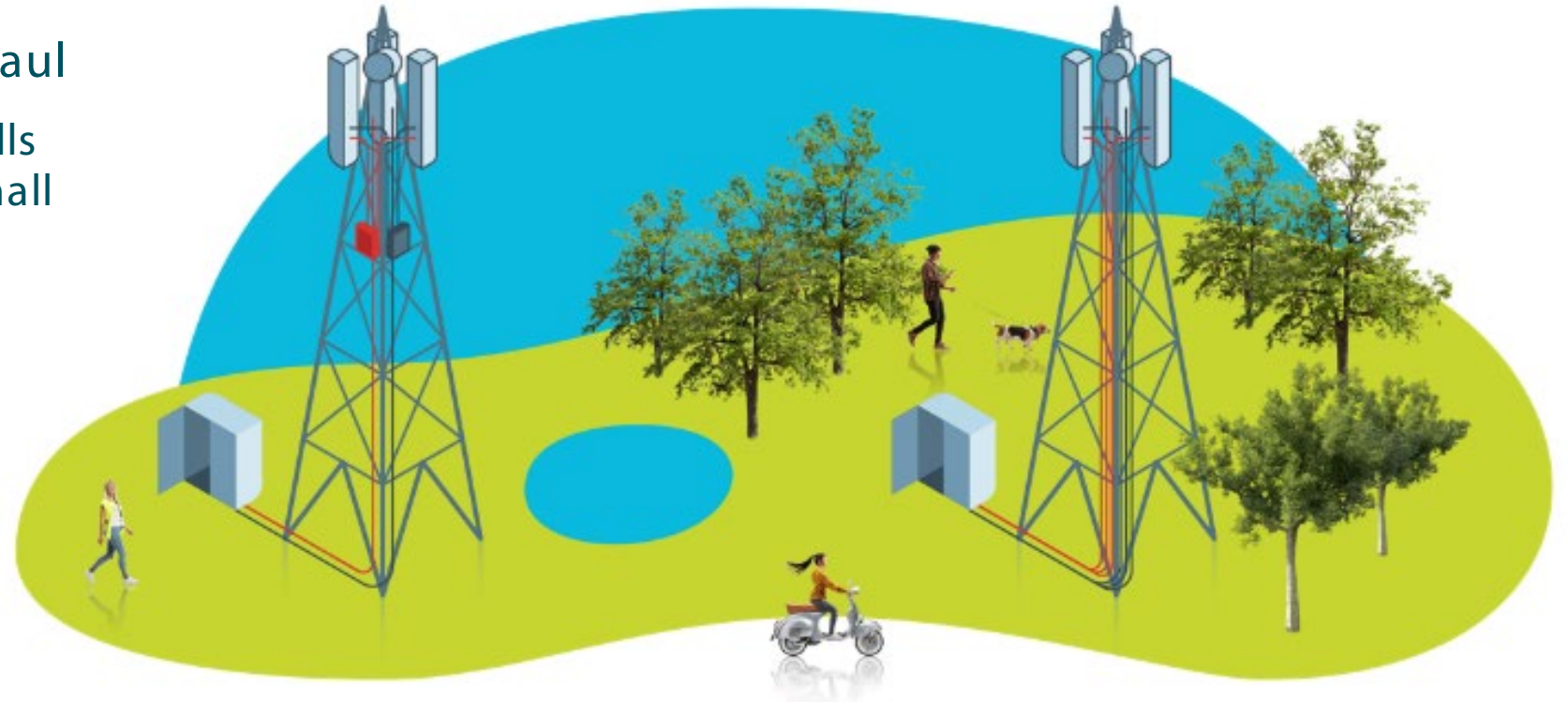
- Easy-to-install kits for basements (DOMINO), floor boxes (VERTHOR) & premise (@XS)
- Discrete cabling & accessories
- CPR rated vertical cabling for high-rise buildings



4G & 5G Radio Access Networks

Global RAN (Radio Access Network) offer adapted to local specifications & usages addressing fronthaul & backhaul

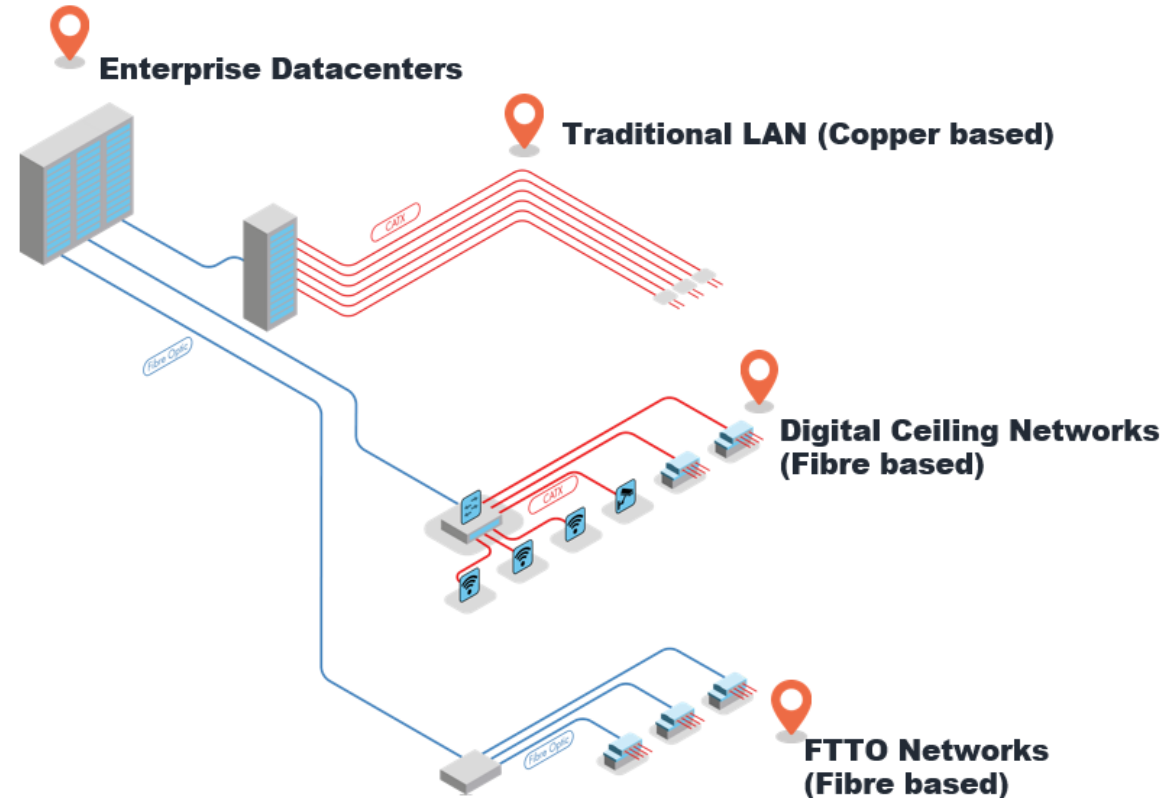
- Solutions addressing macro cells architecture & preparing for small & indoor cells deployment
- European range with local manufacturing presence
- Reduced operational cost & enhanced reliability of the infrastructure



Helping our customers to make #smartchoices

DATA NETWORKS LAN & DATA CENTRE

- A wide choice of LAN & Data Centre infrastructure solutions
- A comprehensive range of active & passive LAN solutions
- Meeting today's demands for flexibility, reliability and sustainability



Invest in Greece

OPTICABLE S.A.

Production Plan in Aghia Marina, Stylida



Invest in Greece,

Aghia Marina, Stylida



Invest in Greece,

Aghia Marina, Stylida

- Investments ~10M€ in the last 5 years for the modernization of the production lines.
- Adequate Capacity to serve all our customers worldwide
- ISO certificates: 45001, 9001, 14001
- All fibre technologies: Tight - Loose - μ Loose - μ bundle
- 2 000 cable designs in our database



Invest in Greece,

Aghia Marina, Stylida

Additional Customer Services:

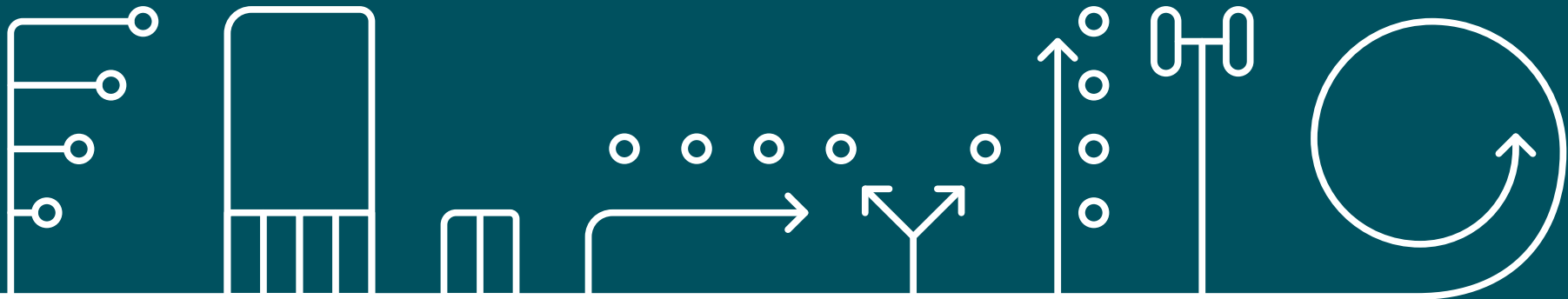
- Warehousing Services
- Special Services according to customer's needs

Plans for the future:

- Increase the number of employees by 30% within 2024
- Aggressive investment plan for the factory expansion



Thank you!



#smartconnection

